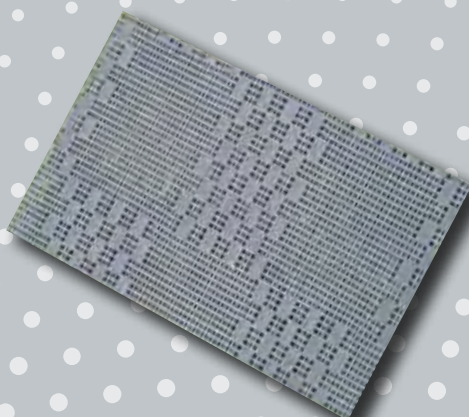


# SECTION 1



## AIR CONDITIONERS

(Product Group - 100)

Aircommand	005 - 007
Dometic (including heating)	007 - 009
Truma	007 - 009

## PRIVACY ROOMS

(Product Group - 150)

Fiamma	010 - 011
Coast Awning Wall Kits	012 - 013
Orbit Annexes	014 - 016

## AWNINGS & ACCESSORIES

(Product Group - 200)

Fiamma Awnings	017 - 022
Fiamma Adapter Brackets	022
Awning Accessories	023 - 025, 030 - 033
Fiamma Awning Spare Parts	026 - 029
Floor Matting	034 - 035
Sunscreens	036 - 038
Carefree Awnings and Accessories	039 - 047

## BUILDING MATERIALS

(Product Group - 250)

Caravan Bed Frames	048
Canopy Lift Mechanisms	049
Pop Top & Camper Parts	050 - 051
Aluminium Extrusion & Mould Infills	051 - 053
Aluminium Cladding	053
Tape Foam	054
Lippert Slide Out Rooms	055 - 056

## FIAMMA PRIVACY ROOMS

In fifteen minutes you double the space available for your family. The widened windows, rounded forms and the insertion of grey tones make the product more elegant and modern. The quality materials and the extremely resistant structure guarantee the functionality and sturdiness of the product already appreciated by campers.

### Windows

Front and side panels are composed of openable crystal windows, equipped with mosquito net and a velcro strip for safe closing of the window.

### Structure

Fast Clip, for a safe, quick and easy installation. The system works with the principle of the two profiles hinged with the spring-system Quick Lock and fastened in the Sandwich way. Made of anodized aluminium. The anti-wind support Magic Privacy is optionally available for perfect stability.

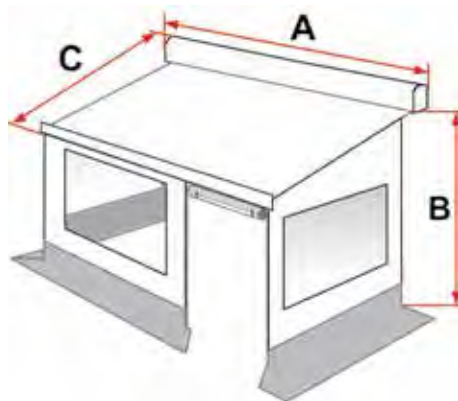
### Colours and Materials

UV resistant, waterproof and washable vinyl fabric, colour: white and grey.

### Front Panel

Front panels are interchangeable. This means that door and window can be mounted on either the left hand side or on the right hand side.

Part Number	Description	Awning Length (A)	Height from Ground (B)	Weight
150-02302	300 Medium	300cm	225-250cm	24.5kg
150-02304	350 Medium	350cm	225-250cm	24.9kg
150-02306	400 Medium	400cm	225-250cm	25.4kg
150-02308	450 Medium	450cm	225-250cm	25.9kg
150-02310	300 Large	300cm	251-280cm	24.7kg
150-02312	350 Large	350cm	251-280cm	25.2kg
150-02314	400 Large	400cm	251-280cm	25.7kg
150-02316	450 Large	450cm	251-280cm	26.2kg
150-02318	500 Large	500cm	251-280cm	26.7kg
150-02320	550 Large	550cm	251-280cm	27.2kg



### 150-01200

#### FIAMMA VEHICLE DRAUGHT SKIRT

Great for protection against wind or rain. The Draught Skirt comes with an installation kit which includes snap fasteners and even has skirting protection for your wheels. It can be shortened if required.

Dimensions: 550L x 60Hcm



**150-02200N**  
**FIAMMA SIDE W PRO**

Fiamma's side panels can be installed on either side of a Fiamma awning. Suitable for use on F45 awnings from 3m long with 2.5m extension.



**200-08096**  
**FIAMMA SIDE W PRO CARAVAN STORE**

Side panel with a large full light Crystal window and vinyl extension to the floor. Made of rot-proof vinyl, washable fabric with UV protection. Simple to install. Delivered as standard with telescopic tension rafter and elastic hooks and pegs. From 2.25m and above.



**150-02250N**  
**FIAMMA DUCATO REAR DOOR COVER**

An enclosure for the rear doors of Fiat Ducato, Citroen Jumper, Peugeot Boxer and Mercedes Sprinter (with high roof built after June 2006). It is quick to install and is supplied with side panels and a front enclosure that can be rolled up. A double rail is attached to the water gutter of the Ducato whilst the aluminium rafter blocks the opening of the two rear doors and hence keeps the fabric taut. Standard delivered with: double rail, awning with front and side panels, rafter (for stability) and a kit with elastic tension ropes.

**Weights:** 3.3kg





## COAST AWNING WALL KITS



An inexpensive alternative for Pop Top and Caravan owners to extend your living space whilst on holiday. Innovative design has ensured that each Coast Awning Wall Kit is supplied with three doors (one on each wall), giving you flexibility on which side to open up for access. Suitable for rollout awnings (from 11ft - 18ft) these Awning Wall Kits are made from polyester; not only is polyester easy to wash and dry but it is known for its strength and durability.

### Benefits at a glance

- > Each window comprises three components: an outer polyester flap, Clear PVC and a flyscreen allowing for permanent airflow minus the insects!
- > Installation is flexible (i.e. it can be fitted using telescopic poles or sail track)
- > A draught skirt and wheel kit is provided with each kit, these are made from a light weight grey PVC
- > Adaptable to suit awnings with its guide track at up to 9ft (2.7m) in height and projections of up to 8ft (2.4m)

### Specifications

The walls are constructed of weaved Polyester yarns (0.46mm thick).

The windows are made from clear PVC with a 0.27mm thickness.

The side wall and front wall mudflaps are manufactured from a non-fraying, grey PVC with webbing.

The draft and wheel covers are made from a light weight grey PVC with webbing.

Part Number	Description
<b>150-03070</b>	To Suit 11' Rollout Awning
<b>150-03000</b>	To Suit 12' Rollout Awning
<b>150-03010</b>	To Suit 13' Rollout Awning
<b>150-03020</b>	To Suit 14' Rollout Awning
<b>150-03030</b>	To Suit 15' Rollout Awning
<b>150-03040</b>	To Suit 16' Rollout Awning
<b>150-03050</b>	To Suit 17' Rollout Awning
<b>150-03060</b>	To Suit 18' Rollout Awning



Awning Wall Kit shown has been installed on a Caravan

## COAST KIRRA ANNEX AWNING AND INNER TENT KIT SET

# 1

## KIRRA ANNEX AWNING



The Coast Kirra Annex is a must for all motorhomes, vans and caravans that want the convenience of an additional living area but still have the use of the vehicle while camping. This unique drive-away annex can be pitched and left free standing and is easily attached to most vehicles. This has been designed with Australia in mind and comes with a list of true features which will make any camper smile.

### 150-05014

#### COAST KIRRA ANNEX AWNING AND INNER TENT KIT SET

- › Ideal for VW Kombis, Fiat Ducato, Ford Transit vans, Hi-ace, VW transporter range etc.
- › Removable Velcro spline which makes separating the vehicle and tent easy when using rope track
- › Colour coded floor tabs makes it quick and easy to attach the floor
- › Connects easily to vehicles when using rope track
- › Multi fit elastic side when attached to vehicle
- › Large Flyscreen Windows
- › Inner tent kit creates two rooms within
- › Open Air-flow design
- › Awnings over access areas
- › Sealed Zip-In tubed flooring
- › 8ft (240cm) High Ceiling
- › Dual access on either side
- › Double sided front door
- › Two clear windows with roll up blinds
- › Hi-Vis guide ropes
- › Complete with inner tent - creating two rooms
- › Sleeps up to 4
- › Vehicle Height Attachment 180-225cm and 235-280cm

### Specifications

External foot print: 240 x 340cm

Inner foot print: 210 x 340cm

Internal Height: 210cm

Pack Size: 50cm x 80cm

Weight: 25.9kg

### 150-05010

#### COAST KIRRA ANNEX AWNING ONLY

### 150-05012

#### COAST KIRRA ANNEX INNER TENT ONLY





## ORBIT ASTRO ANNEXE



The Orbit Air Astro Annexe is an inflatable annexe suitable for various caravans and camper trailers.

It is manufactured using high-strength waterproof 300D micro weave poly cotton canvas. Its lightweight structure and modern curved design make it very robust for optimal performance in high winds. The Orbit Air Astro Annexe provides an additional living or storing area while camping or caravanning.

It protects you, your family, your friends and your gear from weather, dirt and insects. It is spacious and filled with light, while offering superior UV protection. Setting-up the Orbit Air Astro Annexe is simple and easy for anyone! You won't believe how soon your annexe will be set up leaving you to kick back and enjoy your caravanning adventures. The Orbit Air Astro Annexe comes in 2 different heights to suit a multitude of caravan or camper trailer sizes: there is a "low" version for touring caravans and campers, and a "high" version for off-road variants

### Features

- > Inflatable for easy set-up
- > Roof beam structure for simplistic rigidity
- > Waterproof 300D micro weave poly cotton canvas
- > Superior UV protection: UPF50+
- > Excellent ventilation
- > 3-layered window system (mesh, plastic & canvas)
- > Super quick to set up and take down
- > Wind skirt, ground sheet and dirt skirt included
- > Plastic LED sleeve for fitting an optional LED light strip
- > Pre-attached storm buckles and webbing straps
- > Sail track included
- > Hand pump with pressure gauge included
- > Adjustable ladder bands and steel pegs included
- > All packed in a practical carry bag

**150-06000**

**ORBIT AIR ASTRO ANNEXE 325 LOW**

**150-06002**

**ORBIT AIR ASTRO ANNEXE 325 HIGH**





The Orbit Air Comet Annexe is a perfect choice for any camper, who wants robust annexe that provides extra space, style and convenience without having to pay high price or carry a lot of extra weight.

The Orbit Air Comet is a comprehensive, single-inflation point caravan annexe, manufactured using waterproof 300D micro weave poly cotton canvas.

It is lightweight with a modern curved design, which provides robustness for optimal performance in high winds. The Orbit Air Comet Annexe provides extra living space for family, friends or your gear and protection from weather, dirt and other social undesirables. It is spacious and light-filled, offers superior UV protection and is very simple to set up and take down, which makes it both convenient and also family-friendly. An optional detachable extension room is available for the Comet - the Orbit Air Capsule. This can be fitted at either, or both ends of the Orbit Air Comet Annexe, to create even more useful living or storage space. The Orbit Air Comet Annexe comes in 2 different heights to better suit camper trailers: there is a "low" version for touring campers, and "high" version for off-road variants.

### Features

- > Single inflation point for easy set-up
- > Roof air beam structure for simplistic rigidity
- > Waterproof 300D micro weave poly cotton canvas
- > Superior UV protection: UPF50+
- > Excellent ventilation
- > 3-layered window system (mesh, plastic & canvas)
- > Super quick to set up and take down
- > Wind skirt, ground sheet and dirt skirt for extra protection included

- > Plastic LED sleeve for fitting an optional LED light strip
- > Pre-attached storm buckles and webbing straps
- > Removable side door panels
- > Secondary canvas on side doors
- > Sail track included
- > Hand pump with pressure gauge included
- > Adjustable ladder bands and steel pegs included
- > All packed in a practical carry bag
- > Optional Orbit Air Capsule Extension Room available

### 150-06004

#### ORBIT AIR COMET ANNEXE 325 LOW

### 150-06006

#### ORBIT AIR COMET ANNEXE 325 HIGH





**150-06008****ORBIT COMET CAPSULE**

The Orbit Air Capsule is an inflatable extension room for the Orbit Air Comet Annexe. Add even more living or storage space to your Orbit Air Comet Annexe. The Capsule can be fitted at either, or both ends. Use it as a bedroom or for extra storage!

**Features**

- > Single inflation point for easy set-up
- > Waterproof 300D Micro weave poly cotton canvas
- > Superior UV protection: UPF50+
- > Excellent ventilation
- > Super quick to set up and take down
- > Inner tent included
- > Pre-attached storm buckles and webbing straps
- > Adjustable ladder bands and steel pegs included
- > All packed in a practical carry bag

