

# SECTION 1



## AIR CONDITIONERS

(Product Group - 100)

Aircommand	005 - 007
Dometic (including heating)	007 - 009
Truma	007 - 009

## PRIVACY ROOMS

(Product Group - 150)

Fiamma	010 - 011
Coast Awning Wall Kits	012 - 013
Orbit Annexes	014 - 016

## AWNINGS & ACCESSORIES

(Product Group - 200)

Fiamma Awnings	017 - 022
Fiamma Adapter Brackets	022
Awning Accessories	023 - 025, 030 - 033
Fiamma Awning Spare Parts	026 - 029
Floor Matting	034 - 035
Sunscreens	036 - 038
Carefree Awnings and Accessories	039 - 047

## BUILDING MATERIALS

(Product Group - 250)

Caravan Bed Frames	048
Canopy Lift Mechanisms	049
Pop Top & Camper Parts	050 - 051
Aluminium Extrusion & Mould Infills	051 - 053
Aluminium Cladding	053
Tape Foam	054
Lippert Slide Out Rooms	055 - 056

## CARAVAN BED FRAMES



Made from lightweight aluminium (which is 30% lighter than a standard steel bed frame), the Coast Bed Frames are designed in Australia. Their frame is powder coated in a neutral colour (stone beige) to compliment any RVs interior. Slats are made of sturdy European birch timber which is not a hard wood; it therefore offers more flexibility, making it more resilient to breaks. The slats have a textured finish on the side that makes contact with an applied mattress - this reduces shifting caused by movement. The slats are attached to the frame by means of rubber boots which are more flexible than the polypropylene alternative (as harder plastics tend to crack and split over time due to movement). Comes with a 1 year manufacturer's warranty on the frame.

**250-00300**  
**CARAVAN BED FRAME ALUMINIUM**  
**PRINCE SPLIT HEAD**

Dimensions (open): 1450W x 1580L (mm)  
 Dimensions (closed): 1450W x 1400L (mm)  
 Weight: 13.5Kg

**250-00302**  
**CARAVAN BED FRAME ALUMINIUM**  
**DOUBLE SPLIT HEAD**

Dimensions (open): 1325W x 1580L (mm)  
 Dimensions (closed): 1325W x 1400L (mm)  
 Weight: 12.5Kg



**150-00200****POP TOP INSERT BOWS**

These curved bows slide into most pop top vinyl sleeves to ensure the vinyl or canvas folds in when the roof is lowered. They extend up to 280mm in length.

**CANOPY LIFT MECHANISMS (FLAT)**

A flat 'scissor' style canopy lifter which raises the roof on a pop-top or campervan. They are made of a steel track on the bottom and top sections, as well as two flat steel lengths that form an 'X' and pivot in the centre. Available in two lengths.

**250-00500****CANOPY LIFT MECHANISM STANDARD TENSION SPRING**

Width: 900mm  
Lift Height: 685mm  
Weight Rating: 40kg

**250-00510****CANOPY LIFT MECHANISM STANDARD TENSION SPRING**

Width: 700mm  
Lift Height: 560mm  
Weight Rating: 35kg

**250-00520****CANOPY LIFT MECHANISM (TUBULAR)**

A tubular 'scissor' style canopy lifter which raises the roof on a pop-top or campervan. It is made of a steel track on the bottom and top sections, as well as two tubular steel lengths that form an 'X' and pivot in the centre.  
Width: 900mm  
Lift Height: 685mm

**250-00530****CANOPY LIFT MECHANISM 1200MM**

A flat 'scissor' style canopy lifter which raises the roof on a pop-top or campervan. It is made of a steel track on the bottom and top sections, as well as two steel lengths that form an 'X' and pivot in the centre.  
Width: 1200mm  
Lift Height: 990mm  
Weight Rating: 35kg

**CANOPY EASY LIFT ARMS**

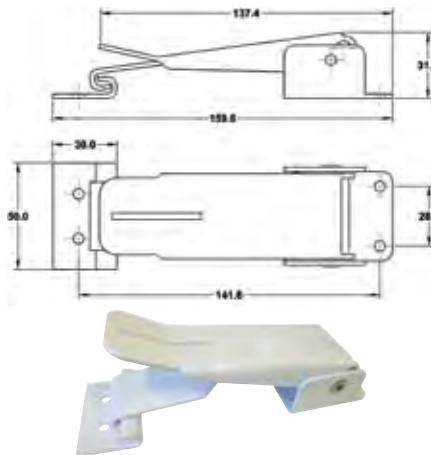
Canopy easy lift arms (pair), made from 16mm square tube steel with a wall thickness of 1.2mm.

- > White powder coat finish
- > Sold per pair

**250-00546****CANOPY EASY LIFT ARMS - SMALL****250-00548****CANOPY EASY LIFT ARMS - LARGE****250-00544****CANOPY EASY LIFT ARMS - SILVER LATCH**

**ROOF CLAMP FOR POP TOPS****250-00552****ROOF CLAMP FOR POP TOP – WHITE**

(2 Part kit)

**250-00554****ROOF CLAMP WITH J HOOK FOR POP-TOP BLACK**

Essential for all pop tops, these roof clamps secure the roof in the lowered position whilst in travel. Comes as a 2-part kit, a clamp & small J bracket.

**250-00560****J HOOK FOR WHITE POP-TOP CLAMP****250-00602****ROOF CLAMP FOR POP-TOP – SILVER**

(2 Part kit)

**250-00610****J HOOK FOR SILVER POP TOP CLAMP****250-00620****LOCKABLE ROOF CLAMP FOR POP-TOP – SILVER**

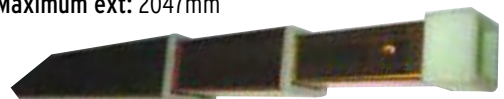
Allows you to lock your pop top roof in the closed position by using a padlock. (Padlocks are not included).

**200-08038****COAST POP TOP SUPPORT – WHITE**

Give your pop top roof support when it is in the open position. Its telescopic mechanism makes it easy to use, and once the appropriate height is achieved, a simple twist locks it in position. Made from an aluminium tube with rubber caps on each end for a non-slip fit.

**Closed Length:** 34cm**Max Open Length:** 50cm**250-03000****3 STAGE CAMPER LIFTER WITHOUT WINGS**

Once you have successfully opened your Jayco camper trailer these lifters act as a support to keep your camper trailer in the 'open' position.

**Compacted ext:** 770mm**Maximum ext:** 2047mm

## 250-03100

### COAST CAMPER ROOF SUPPORT POLE

Coast Camper Roof Support Poles are designed to provide additional support for your camper's roof. Perfect for when your roof is up for long periods of time or if you have added additional load to your roof such as an awning. This product has the following great features:

- > Made from white powder coated lightweight aluminium
- > Rubber end caps for a non-slip fit
- > Can be trimmed down to suit a range of RVs.

#### Specifications

Length: 1500mm

Width: 22mm

Length with Rubber End Caps: 1525mm

Rubber End Cap Width: 35mm



## 250-03009

### CAMPER LIFTER CHANNEL DOOR

Door and surround to suit Jayco camper lifter channels.



## 250-03010

### PUSH RODS 66"

These strong, flexible push rods guide the roof of your camper trailer upwards as you wind the crank. They help to push the lifter arm up.



## PLASTIC BED SADDLES

## 250-03020

### PLASTIC BED SADDLE TO SUIT CAMPER



## 250-03022

### PLASTIC BED SADDLE TO SUIT EXPANDA



## TRULINE ALUMINIUM

## 250-02000

### TRULINE ALUMINIUM WHITE 5M

Also known as Millard Series 80 Aluminium. This is a powder coated aluminium edging used to seal the joins of the exterior of your RV e.g. where the side wall meets the roof or the rear panel. (Has a 25mm lip to cover the roof or front/ rear).



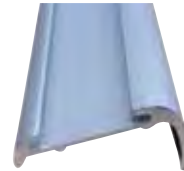
## 250-02002

### TRULINE ALUMINIUM CUSTOM MATT BLACK 5M



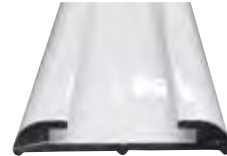
## 250-02004

### TRULINE CLEAR ANODISED 5M



## 250-02006

### TRULINE FLAT ALUMINIUM WHITE 31MM X 4.8M



## 250-02008

### TRULINE FLAT ALUMINIUM BLACK 31MM X 4.8M



## 250-02010

### TRULINE ALUMINIUM WHITE (J MOULD - NARROW) 22MM X 4.8M



## 250-02012

### TRULINE ALUMINIUM BLACK (J MOULD - NARROW) 22MM X 4.8M



**250-02014**  
**TRULINE FLAT**  
**ALUMINIUM WHITE**  
**(NARROW) 22MM X 4.8M**



**250-02016**  
**TRULINE FLAT**  
**ALUMINIUM BLACK**  
**(NARROW) 22MM X 4.8M**



### MOULD INSERT FOR SINGLE SAILTRACK

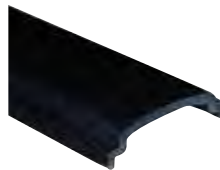
Used mostly in the manufacturing process to cover external screw points and give an overall neater appearance. Available with an 18mm width.

**250-02126**  
**WHITE MOULD INSERT**  
**100M ROLL**



**250-02136**  
**WHITE MOULD INSERT**  
**300M ROLL**

**250-02127**  
**BLACK MOULD INSERT**  
**100M ROLL**



**250-02137**  
**BLACK MOULD INSERT**  
**300M ROLL**

### MOULD INSERT FOR TRULINE ALUMINIUM

Fits inside the Truline Aluminium to cover up any unsightly screws. (Sold per metre)

**250-02128**  
**WHITE MOULD INSERT**  
**100M ROLL**



**250-02138**  
**WHITE MOULD INSERT**  
**250M ROLL**

**250-02130**  
**BLACK MOULD INSERT**  
**100M ROLL**

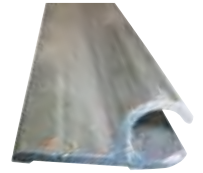


**250-02140**  
**BLACK MOULD INSERT**  
**250M ROLL**

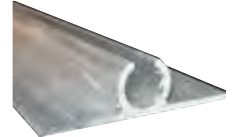
## SAILTRACK

A solution to fixing one end of your roll out awning to the wall of your RV or the roof of your pop top. Alternatively, mount these vertically onto the walls of your RV enabling you to install an annexe room. Drilling is required to attach to the wall of the RV. Comes in two colours.

**200-08100**  
**SAILTRACK SINGLE**  
**SIDED 6M MILL FINISH**



**200-08102**  
**SAILTRACK DOUBLE**  
**SIDED 6M MILL FINISH**



**200-08104**  
**SAILTRACK SINGLE**  
**SIDED 6M WHITE**



**200-08105**  
**SAILTRACK SINGLE**  
**SIDED 6M BLACK**



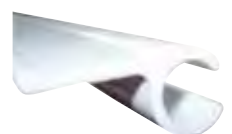
**200-08106**  
**SAILTRACK DOUBLE**  
**SIDED 6M WHITE**



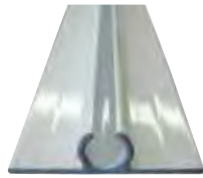
**200-08107**  
**SAILTRACK DOUBLE**  
**SIDED 6M BLACK**



**200-08110**  
**SAILTRACK SINGLE**  
**SIDED 4.3M WHITE**

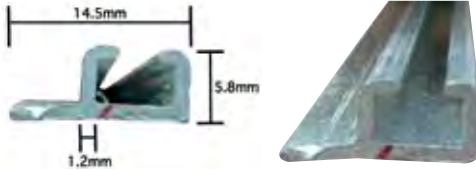


**200-08112**  
**SAILTRACK DOUBLE**  
**SIDED 4.3M WHITE**



**200-08129**  
**TOP FIX CURTAIN TRACK 5M (MILL FINISH)**

An anodised aluminium curtain track that comes pre drilled. Runners are not included.



## COAST ALUMINIUM CLADDING

### Specifications

Sheet Thickness: 0.55mm

Tolerance: 3005, H44 temper

Top Finish: Polyester paint (25um thick) with and 80% applied.  
 (It is then covered with a 35-50um plastic film for protection)

Bottom Finish: Grey primer paint (5-7um thick)

**250-01100**  
**6.1 X 0.315 CP10 DEEP VIOLETONE**  
**WHITE PLASTIC FILM**

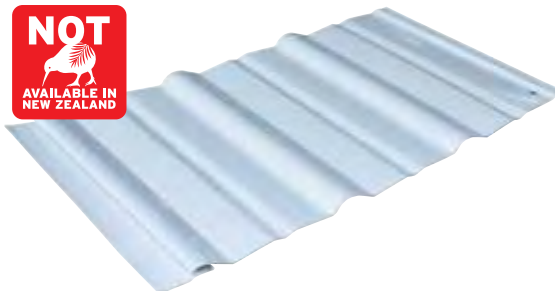
**250-01110**  
**7.3 X 0.315 CP10 DEEP VIOLETONE**  
**WHITE PLASTIC FILM**

**250-01120**  
**8.0 X 0.315 CP10 DEEP VIOLETONE**  
**WHITE PLASTIC FILM**

**250-01130**  
**6.1 X 0.315 CP10 DEEP VIOLETONE**  
**WHITE NO PLASTIC FILM**

**250-01140**  
**7.3 X 0.315 CP10 DEEP VIOLETONE**  
**WHITE NO PLASTIC FILM**

**250-01150**  
**8.0 X 0.315 CP10 DEEP VIOLETONE**  
**WHITE NO PLASTIC FILM**



**250-01200**  
**6.1 X 0.315 CPSF10 SHALLOW VIOLETONE**  
**WHITE PLASTIC FILM**

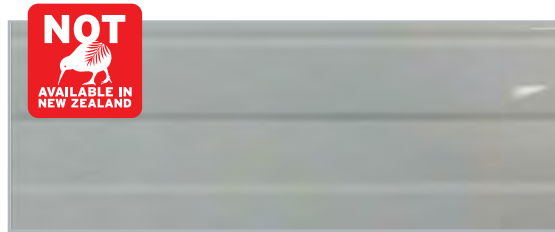
**250-01210**  
**7.3 X 0.315 CPSF10 SHALLOW VIOLETONE**  
**WHITE PLASTIC FILM**

**250-01220**  
**8.0 X 0.315 CPSF10 SHALLOW VIOLETONE**  
**WHITE PLASTIC FILM**

**250-01230**  
**6.1 X 0.315 CPSF10 SHALLOW VIOLETONE**  
**WHITE NO PLASTIC FILM**

**250-01240**  
**7.3 X 0.315 CPSF10 SHALLOW**  
**VIOLETONE WHITE NO PLASTIC FILM**

**250-01250**  
**8.0 X 0.315 CPSF10 SHALLOW VIOLETONE**  
**WHITE NO PLASTIC FILM**



**250-01300**  
**2.44 X 1.22 CP48 VIOLETONE**  
**WHITE PLASTIC FILM**

**250-01320**  
**2.44 X 1.22 CP48 VIOLETONE**  
**WHITE NO PLASTIC FILM**



**250-01310**  
**2.44 X 1.22 CPF3 VIOLETONE**  
**WHITE PLASTIC FILM**

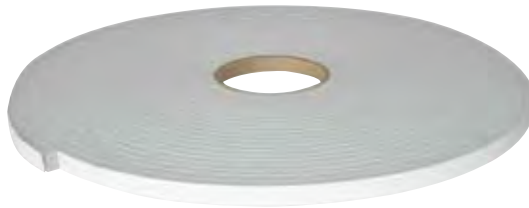
**250-01330**  
**2.44 X 1.22 CPF3 VIOLETONE**  
**WHITE NO PLASTIC FILM**



**TAPE FOAM GREY PVC SEALING**

This general purpose foam tape is manufactured for use in applications requiring positive seals on irregular surfaces or when flex and conformability to tight radius curves are critical considerations.

- > Low density foam is easy to compress and conformable, but is still strong and resilient
- > Insulates against temperature, sound and vibration
- > Formulated from durable Poly Vinyl Chloride (PVC) for long service life.
- > Closed cell structure completely seals out air, moisture, light and dust when compressed at least 30%.

**250-02500****6.4MM THICK X 12MM X 15.2M****250-02502****9.5MM THICK X 12MM X 7.0M****250-02504****12.7MM THICK X 12MM X 7.0M****250-02506****6.4MM THICK X 18MM X 15.2M****250-02508****9.54MM THICK X 18MM X 7.0M****250-02510****12.7MM THICK X 18MM X 7.0M**



## THE LIPPERT RANGE



Exclusively available through Coast to Coast, Lippert present their ready-to-use in Wall Slide Out Systems, allowing Australian manufacturers to provide more living space to RV consumers without compromising overall size. In order to provide greater flexibility, improved aesthetics and pricing, Lippert Slide Out Systems are no longer sold in kits. Individual components can now be ordered to suit your specific requirements and a list of parts and required quantities is now available. For your convenience it is still possible to order all the components that make up each of the superseded kits. Just let your friendly Coast to Coast sales team know the kit number and quantity required and we'll handle the rest.

### Durable and Corrosion Resistant

Lightweight anodised aluminum resists rust better than systems with chains, cables and exterior mounting brackets.

### More Space

Slide-Out mechanism fits inside the wall cavity leaving significantly more interior space. Other bulky systems require a slide room fascia to cover motor and pulleys.

### Leak Free

The 50/50 power split ensures both slide room sides properly compress seals. Independent side control allows different stroke lengths to compensate for bulb seals setting or wearing down unequally.

### Lightweight

Lightest slide system on the market keeps overall RV weight down.

### No Adjustments

The In-Wall Slide-Out System never needs complicated adjustments.

### Smart Control Technology

Smart system continually monitors motors for safe operation, and stops the slide-out if an issue is detected.

### Specifications

- > Each Slide Out System (per side) consists of: x1 Motor Drive, x2 Drive Gears and x1 Torque Shaft
- > Can be installed on RVs with a wall thickness of 25-38mm
- > Has a manual override function
- > Switch is mounted internally (to move room in or out)

Slide Out Room Kit 1	1478mm-610mm
Slide Out Room Kit 2	1578mm-610mm
Slide Out Room Kit 3	1678mm-610mm
Slide Out Room Kit 4	1478mm-910mm
Slide Out Room Kit 5	1578mm-910mm
Slide Out Room Kit 6	1678mm-910mm
Slide Out Room Kit 7	1978mm-910mm
Slide Out Room Kit 8	1813mm-910mm



CTC P/N	DESCRIPTION	QTY	UNIT	NOTE	D-SEAL METRE
<b>SLIDE OUT H COLUMN AND RACK</b>					
250-05030	Lippert Slide Out H Column and Rack Only. 1478mm-610mm. V000293019		ea	1 per Kit	14
250-05032	Lippert Slide Out H Column and Rack Only. 1578mm-610mm. V000293020		ea		14
250-05034	Lippert Slide Out H Column and Rack Only. 1678mm-610mm. V000293021		ea		15
250-05036	Lippert Slide Out H Column and Rack Only. 1478mm-910mm. V000299431		ea		14
250-05038	Lippert Slide Out H Column and Rack Only. 1578mm-910mm. V000299432		ea		14
250-05040	Lippert Slide Out H Column and Rack Only. 1678mm-910mm. V000299433		ea		15
250-05042	Lippert Slide Out H Column and Rack Only. 1978mm-910mm. V000317788		ea		16
250-05044	Lippert Slide Out H Column and Rack Only. 1813mm-910mm. V000323782		ea		15
250-05046	Lippert Slide Out H Column and Rack Only. 911mm-889mm. V000355073	N/A			
<b>CONTROLLER</b>					
250-05100	Slide Out Room Controller. 211852		ea	1 per Kit	
<b>HARNESS</b>					
250-05152	Lippert Slide Out 20' (6096mm) Harness for Controller to Motor. 229755		ea	2 per Kit	
<b>SWITCH</b>					
250-05156	Switch (40 amp) with 4 Wire Pigtail for Slide-Out. 0187505		ea	1 per Kit	
<b>EXTERIOR T MOLD AND T MOLD COVERS (BLACK/WHITE)</b>					
250-05162	Aluminium T-Mold 1801 15' (4572mm) Black (Hole Punched). 0713833		ea	3 per Kit	
250-05164	Aluminium T-Mold 1801 15' (4572mm) Polar White (Hole Punched). 0713834		ea	3 per Kit	
250-05166	Plastic Corner Cover for Aluminium T-Mold White "700". 0713867		ea	4 per Kit	
250-05168	Plastic Corner Cover for Aluminium T-Mold Black "700". 0713866		ea	6 per Kit	
250-05170	Aluminium Angle 40mm x 25mm x 3mm x2400mm		ea	3 per Kit	
<b>RUBBER SEAL AND CORNER CUP SEAL</b>					
250-05172	Top Double Wiper Seal Black in 15' (4572mm) Length. 0713831		ea	1 per Kit	
250-05174	Bottom Single Wiper Seal Black in 15' (4572mm) Length. 0713836		ea	1 per Kit	
250-05180	Rubber "D" Seal Black (Sold per Metre). 0713835		Metres	Refer to "D-Seal" Column	
250-05176	Bottom Right Hand Corner Cup Seal Black. 0217506		ea	1 per Kit	
250-05178	Bottom Left Hand Corner Cup Seal Black. 0217505		ea	1 per Kit	
<b>FLOOR ROLLER</b>					
250-05158	Slide Out Room Roller & Bracket 26mm. 217900		ea	6 per Kit	