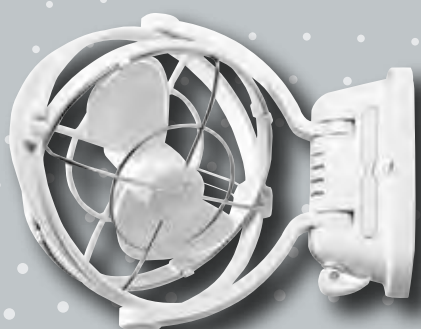


SECTION 4



ELECTRICAL EQUIPMENT

(Product Group - 500)

| | |
|----------------------------------|-----------|
| Fans and Smoke Alarms | 170 |
| Battery Supplies | 171 - 175 |
| Power Inlets and Outlets | 187 - 190 |
| Power Points & Switches | 188 - 192 |
| Electrical Leads | 192 - 193 |
| CMS Equipment | 193 - 195 |
| 15amp-10amp Adaptors | 195 - 196 |
| NARVA Accessory Sockets | 196 - 197 |
| Solar Panels | 198 - 199 |
| Tyre Inflators (Air Compressors) | 200 |
| Trailer Plugs and Sockets | 200 - 203 |
| Cable Ties | 203 |
| Caframo Fans | 204 - 205 |
| Briggs and Stratton Generators | 206 - 208 |
| Pressure Cleaners | 208 - 209 |

LIGHTING EQUIPMENT

(Product Group - 500)

| | |
|----------------------------|-----------|
| Lights and Lenses | 175 - 177 |
| Truck and Trailer Lighting | 177 - 181 |
| Led Bulbs | 182 - 183 |
| Reflectors | 183 - 184 |
| Sphere™ Wireless Lighting | 185 - 186 |

GAS EQUIPMENT

(Product Group - 550)

| | |
|-----------------------------|-----------|
| Gas Regulators and Hoses | 210 - 213 |
| Gas Unions, Nuts and Valves | 213 - 216 |
| Gas Cylinders and Cradles | 216 |
| Gas Detector | 216 |

500-00060**FANTASTIC ENDLESS BREEZE FAN**

Great for use in your horse trailer or RV, the Endless Breeze fan provides instant airflow when needed. Its fan has 3 speed settings allowing you to set the airflow at a comfortable rate while operating quietly. Operates on 12V only (comes with the plug & cord) & has a 12" 10-blade fan.

Dimensions: 362H x 343W x 92D (mm)

Weight: 2.27kg

**500-00200****SAFETY HUSH SMOKE ALARM**

Ideal for fast flaming fires, the Hush Smoke Alarm is easy to install with no wiring necessary. It has a feature that enables the alarm to be switched off for 10 minutes in case of false alarms. It also has an ionisation sensing chamber which automatically resets once the smoke is cleared. This smoke alarm comes with a 9V battery which lasts approximately nine months. A warning signal will sound when the battery is running low.

**500-00082****FAN AND LIGHT COMBO (WHITE)**

Suitable for use in Jayco Campers and Expandas, this reading light has a 2-speed fan. It has a 1/4" (6.4mm) jack which allows it to fit into an existing 12V internal light (such as 500-05004, 500-05005, 500-05006 and 500-05007). There are also two plastic U-brackets on the rear/top that will clip onto to a 3/4" - 1" (19.1mm - 25.4mm) camper support pole. Alternatively, it can be hung using the single U-bracket at the back to hang it vertically. Made in the USA to Australian and NZ standards, it also features a curly cord that extends up to 8ft (2.4mt) and comes with a globe*.

** You can replace this globe with a Coast LED, either 500-05758 or 500-05760 will fit.*

Specifications

Power: 12VDC, 1.3A (max)

Dimensions: 250L x 145W (mm)



500-00730**SETEC DRIFTER**

The Setec Drifter is an LCD display unit with the capacity to monitor up to four water tanks and a 12V battery. This means that you'll know when you're running low on fresh water or when your waste tank needs to be emptied (if you choose this as an option to monitor), all whilst observing your battery's status (current going in and out). It is compatible with any 12V lead acid battery, including VRLA, AGM, Gel and even the traditional non-sealed batteries.

The Drifter allows you to control your battery and water pump via a switch on the LCD display. It features all the handy gadgets like a clock and ambient temperature display. If that wasn't enough, it can be used as a nightlight and even has a built in USB charger for low powered devices such as iPods, mobile phones and MP3 players.

Specifications

DC Power Input: 8-15V DC, 0.7-0.35A

USB Output: 5V DC at 0.9A C-Tick Approved

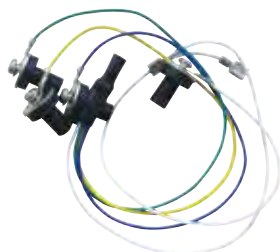
Complies with IEC 61010-1, ED: 2001, CISPR 11:2009

Dimensions: 149L x 85H x 22W (mm)

Weight: 0.21kg

**500-00749****SETEC DRIFTER WATER SENSOR TANK SET**

The Setec Drifter, part number 500-00730 (above) comes with wiring for up to two tanks. You could choose to utilize this to monitor two water tanks or, one water tank and one waste tank. Should you want to monitor extra tanks, a Water Sensor Tank Set must be purchased (one set per tank).

**500-00760****RITAR 12V 100AH AGM DEEP CYCLE BATTERY**

An AGM deep cycle battery with up to 40% more life than general models. Applications for use include: Leisure (Caravan, Motor-camping), Marine (Boat, Yacht) and PV (Solar, Wind Power).

Specifications

Voltage (V): 12

Capacity (Ah): 20h - 100 2h - 83 1h - 65

Dimensions (mm): 328L x 172W x 222H

Weight (kg): 32

Max Discharge Current (A): 500

Max Charge Current (A): 30

**500-00762****RITAR 12V 120AH AGM DEEP CYCLE BATTERY**

Perfect for outdoor applications, the Ritar battery will get your gadgets powered when you need it most. No charging required prior to first use. It is designed for frequent cyclic discharge usage making it great for solar energy systems, golf carts etc. The container is made from ABS plastic.

Specifications

Dimensions (mm): 328L x 172W x 222H

Weight: 32Kg

Max Discharge Current: 1200A (5sec)

Max Charge Current: 36A



LION DEEP CYCLE BATTERIES

The Lion AGM (Absorbed Glass Mat) range of batteries feature a fully sealed design with active electrolytes held between plates in an absorbed state. This gives the battery enhanced discharge and recharge efficiency, high resistance against vibrations and leaks, non-gassing benefits for safety and flexible installation. Ideal for Dual Purpose starting and Deep Cycle requirements in 4WD, caravanning, camping and boating. Comes with a 12month manufacturer's warranty.

500-00790**LION 12V 100AH AGM DEEP CYCLE BATTERY**

Dimensions: 305L x 168W x 208H (mm)

Weight: 28.4kg

Amp Hour: 100 (at 20hr rate)

**500-00792****LION 12V 120AH AGM DEEP CYCLE BATTERY**

Dimensions: 329L x 173W x 209H (mm)

Weight: 32.8kg

Amp Hour: 120 (at 20hr rate)

CCA: 575 (at -180C)

**SPHERE AGM BATTERIES**

Sphere 12V Valve Regulated AGM Rechargeable Batteries are available in two models to suit most needs. Ideal for use in caravanning and camping, the AGM design offers improved discharge and recharge efficiencies. They require less maintenance, are spill proof and are safer for you and the environment compared to conventional alternatives.

500-00820**SPHERE 12V 100AH VALVE REGULATED AGM RECHARGEABLE BATTERY**

Internal resistance: Fully Charged at 25°C: 4.9 Ohm

Max. Discharge Current: 1200A(5s)

Operating Temperature

Discharge: -15 ~50°C

Charge: 0 ~40°C

Storage: -15 ~40°C

Charge Method (25°C)

Max. Charge current: 40

Cycle use: 14.4-15.0v(-30mv/ °c)

Float use: 13.5-13.8v(-20mv/ °c)

Self Discharge: 3% of capacity declined per month at 20°C

Dimensions: 307L x 168W x 214H (mm)

**500-00822****SPHERE 12V 120AH VALVE REGULATED AGM RECHARGEABLE BATTERY**

Internal resistance: Fully Charged at 25°C: 4.9 Ohm

Max. Discharge Current: 1200A(5s)

Operating Temperature

Discharge: -15 ~50°C

Charge: 0 ~40°C

Storage: -15 ~40°C

Charge Method (25°C)

Max. Charge current: 40

Cycle use: 14.4-15.0v(-30mv/ °c)

Float use: 13.5-13.8v(-20mv/ °c)

Self Discharge: 3% of capacity declined per month at 20°C

Dimensions: 330L x 171W x 219H (mm)



CAMCO BATTERY BOX**500-02032****CAMCO BATTERY BOX - SMALL**

Camco RV Standard Battery Box is a black, lightweight, heavy-duty corrosion-resistant polypropylene box which is designed to secure and protect batteries. It includes a lift-off lid, durable woven hold-down strap, foot clamps and stainless steel screws.

- > Includes lift-off lid, durable woven hold-down strap, foot clamps and stainless steel screws
- > Lightweight, heavy-duty corrosion-resistant polypropylene box
- > It has internal dimensions of 273L x 184D x 200H (mm) with 50mm additional head room for battery terminals.

**500-02034****CAMCO BATTERY BOX - LARGE**

Camco RV Large Battery Box is a black, lightweight, heavy-duty corrosion-resistant polypropylene box which is designed to secure and protect batteries. It includes a lift-off lid, durable woven hold-down strap, foot clamps and stainless steel screws.

- > Includes lift-off lid, durable woven hold-down strap, foot clamps and stainless steel screws
- > Lightweight, heavy-duty corrosion-resistant polypropylene box
- > It has internal dimensions of 336L x 184D x 219H (mm) with 50mm additional head room for battery terminals.

**500-02036****CAMCO REPLACEMENT BATTERY BOX STRAP & HARDWARE**

Camco's Replacement Strap for Battery Box measures 990mm long x 38mm wide. It is made of woven polypropylene and includes the hardware to attach it to the battery box.

- > 990mm long x 38mm wide
- > Includes hardware to attach to battery box
- > Made of woven polypropylene
- > Heavy-duty and durable
- > Easy to install

**500-02038****CAMCO STANDARD BATTERY TRAY - PLASTIC**

It is heavy-duty acid-resistant plastic with stainless steel hardware

- > Heavy-duty acid-resistant plastic
- > Stainless steel hardware

**500-02040****CAMCO LARGE BATTERY TRAY - PLASTIC**

It is heavy-duty acid-resistant plastic with stainless steel hardware.

- > Heavy-duty acid-resistant plastic
- > Stainless steel hardware



ANBI SWITCH BATTERY ISOLATOR



The ANBI Battery Switch eliminates drainage of stored power by isolating the battery from power-hungry components like clocks, and general energy leakage. Installation is quick and easy and can be completed in less than 15 minutes.

Even when your ignition key is off, there are still components that draw current and continue to drain your battery. That's why it's common to find it flat when you go to start a vehicle, like a caravan, classic car, or ride-on mower after it's sitting for an extended period of time. This is both inconvenient and costly as a completely flat dead battery can often become damaged if left uncharged for an extended period.

ANBI also provides a theft deterrent by virtually immobilising the vehicle when activated. This can result in significant savings on insurance premiums. Make sure your steed is ready to go when you are, install an ANBI Battery Switch today!

500-02120

ANBI SWITCH - BATTERY ISOLATOR

The ANBI Switch is a simple, high quality, robust solution to help you avoid flat batteries.

- > 5 Year Warranty
- > Simple installation
- > Suitable for wide range of applications
- > Proven anti-corrosive. Exceeds international standards for salt and sea spray.
- > Accelerated life tested for proven durability
- > Designed and manufactured in Australia



500-02122

ANBI SWITCH - CONVERSION KIT

Allows the ANBI Switch to be easily fitted to a variety of battery types and applications.



500-02124

ANBI SWITCH - EXTENSION KIT

Allows the user to fit the ANBI Switch more remotely, out of sight if needed or to avoid a tight space.



500-02126**ANBI SWITCH - RETAIL DISPLAY PACK
(SPECIAL ORDER ONLY)**

This silent sales person allows your customers to trial the ANBI Switch instore. Featuring a light-up LED that shows when the switch is in the ON position, the ANBI Switch Retail Display Unit has proven irresistible in the retail environment. A must for all stockists.

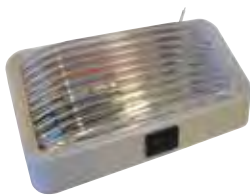
Contains

- > 1 x Display
- > 12x ANBI Switch Retail Units
- > 6 x Conversion Retail Units
- > 6 x Extension Lead Retail Units
- > 50 x Leaflets
- > 2 x A3 Posters
- > 1 x Shelf Wobbler

(BATTERY NOT INCLUDED)

**500-01014****BARGMAN LIGHT REPLACEMENT LENS ONLY****500-01030****BARGMAN PORCH LIGHT WITH SWITCH**

Porch light c/w switch white base - clear lens 12V

**500-01033****LENS ONLY TO SUIT CURRENT PORCH LIGHT (CLEAR)****500-01036****LED ANNEX LIGHT**

Has a white base that mounts onto your RV wall (comes with screws for installation). Also has a clear lens.

Note: This is an interior LED light. It can be used on the exterior provided it is sealed.

**500-01050****COAST LIGHT WITH GRAB HANDLE**

Comes in white to compliment your RV's exterior. Made from UV stabilised plastic, it is lightweight & is supplied with a 10W globe.

**500-01051****LENS FOR COAST LIGHT WITH GRAB HANDLE****500-01057****GRAB HANDLE WITH LED**

Featuring a simple and modern design, the latest Coast Grab Handle sheds light around your RV entry area. Turn it on or off (as required) using the trigger switch found on the underside of the handle. Comes with a five year manufacturer's warranty.

Dimensions: 175H x 149W x 50D (mm)

Voltage: 10 - 36V

Material: Polycarbonate



COAST LED ASSIST HANDLES

Available in 3 colours - Black, White and Chrome, Coast to Coast LED Assist Handles offer practical convenience, stylish modern design and the following great features:

- > LED mode touch switch conveniently located behind the handle
- > IP65 water resistance, built for outdoor use
- > Natural white LED illumination
- > Blue LED courtesy light

Specifications

Voltage: 12V

White Power Draw: 2W

Blue Power Draw: 0.8W

Light Operation: White - Blue - Off

IP Rating: IP65

Carton Quantity: 23

500-01062

**ASSIST HANDLE W/ 12V LED LIGHT
BLACK ABS**

**500-01064**

**ASSIST HANDLE W/ 12V LED LIGHT
WHITE ABS**

**500-01066**

**ASSIST HANDLE W/ 12V LED LIGHT
CHROME ABS**

**COAST LED AWNING LIGHTS**

Great for lighting up your awning area, the Coast LED Awning Lights are waterproof, and easily installed onto your RV by means of two screws. Featuring a pure white light, it runs on 12V DC and is available in two sizes.

500-01250

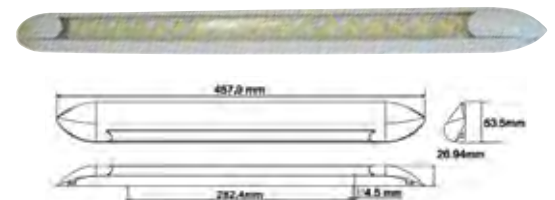
**COAST LED AWNING LIGHT PURE WHITE
(20CM)**

Contains 9 LEDs

**500-01252**

**COAST LED AWNING LIGHT PURE WHITE
(40CM)**

Contains 18 LEDs

**LED OVAL LIGHTS****500-01260**

COAST LED OVAL LIGHT 12V WITH JACK

**500-01262**

COAST LED OVAL LIGHT 12V

**500-01264**

COAST LED OVAL LIGHT 12V DUAL



500-01266**COAST LED OVAL LIGHT 12V DUAL
WITH JACK****OYSTER LENSES****500-01350****OYSTER LENS ONLY SHALLOW GLASS 8"
(200MM)****500-01352****OYSTER LENS ONLY DEEP GLASS 8"
(200MM)****500-01360****OYSTER LENS ONLY DEEP 10" (250MM)****12V INTERNAL LIGHTS****500-05000****WHITE INTERIOR DOME LIGHT WITH ON/
OFF ROCKER SWITCH**

Dimensions (mm): 190W x 109H x 50D

**500-05001****SILVER INTERIOR DOME LIGHT WITH ON/
OFF ROCKER SWITCH****500-05002****WHITE DUAL INTERIOR DOME LIGHT
WITH ON/ OFF ROCKER SWITCH**

Dimensions (mm): 280W x 109H x 50D

**500-05010****LENS TO SUIT INTERIOR DOME LIGHTS
(BOTH DUAL AND SINGLE INTERIOR
LIGHTS)****NARVA L.E.D LIGHTS****500-05020****LED SIDE MARKER LAMP RED/AMBER
LED CHROME BASE**

Dimensions (mm): 74 x 38

**500-05022****LED SIDE MARKER LAMP RED/AMBER
WITH WHITE BASE**

Dimensions (mm): 74 x 38



500-05024**LED FRONT END OUTLINE MARKER LAMP
WHITE WITH CHROME BASE**

Dimensions (mm): 74 x 38

**500-05026****LED FRONT END OUTLINE MARKER LAMP
WHITE WITH WHITE BASE**

Dimensions (mm): 74 x 38

**500-05028****LED FRONT END OUTLINE MARKER
OR EXTERNAL CABIN LAMP AMBER
WITH CHROME BASE**

Dimensions (mm): 74 x 38

**500-05030****LED FRONT END OUTLINE MARKER OR
EXTERNAL CABIN LAMP AMBER
WITH WHITE BASE**

Dimensions (mm): 74 x 38

**500-05032****LED REAR END OUTLINE MARKER LAMP
RED WITH CHROME BASE**

0.5m of cable is provided. 9 - 33V

Dimensions (mm): 74 x 38

**500-05034****LED REAR END OUTLINE MARKER LAMP
RED WITH WHITE BASE**

Dimensions (mm): 74 x 38

**500-05036****LED SIDE DIRECTION INDICATOR LAMP
AMBER WITH CHROME BASE**

0.5m of cable is provided. 9 - 33V

Dimensions (mm): 74 x 38

**500-05040****LED LICENCE PLATE LAMP BLACK
HOUSING**

Dimensions (mm): 95 x 60

**500-05042****LENS TO SUIT SIDE MARKER LAMP**

Dimensions (mm): 114 x 58

**500-05050****LED SEALED EXTERNAL CABIN LAMP
(AMBER)**

Comes with a grey mounting base. These LED's feature virtually unbreakable polycarbonate lenses.

Draw: 0.05A at 12V

Dimensions (mm): 100 x 30



500-05085**POD MULTI LIGHT TWIN PACK**

Compact, portable and versatile, the Reese® POD twin pack is the perfect companion for your next trip. From the bright LED wide beam light located on the top, projecting up to 400 metres; to the 360-degree red warning LED, to the multi-purpose mounting system, the POD is levels above your standard work light or torch. The heavy-duty and weather resistant casing ensures that your POD will last in the harsh Australian terrain whilst the compact, low profile design will let you illuminate those hard to reach areas.

The Reese POD twin pack is the ultimate LED lighting system, ideal for garage, trailer, caravan or boat.

- > Multipurpose Patented REESE® PAD allows mounting magnetically, to hang with an incorporated hook, fixed mount (with screw or velcro strip) or angle mount.
- > 7 RED flashing safety modes to alert others if a hazard or your location; with up to 15 hours in S.O.S. mode
- > 2 WORK LIGHT modes (High Beam and Low Beam) with up to 3 hours on High Beam mode.
- > 140-degree wide beam for extended coverage and maximum lighting
- > 360-degree light projection and visibility of up to 400 metres
- > Compact and low profile for hard to reach places
- > Heavy-duty ABS plastic protects the POD from knocks and bumps.
- > Weather resistant construction keeps it functional in the wet or dust

Pack includes 2 x POD. Each POD requires 3 x AAA batteries.

**NARVA LAMPS & REFLECTORS****500-05100****REAR COMBO LIGHT****- STOP/PARK/DIRECTION INDICATOR**

With shallow body.

Dimensions (mm): 275 x 93

**500-05102****HEAVY DUTY REAR COMBO LAMP****- STOP/DIRECTION INDICATOR**

With grey base.

Dimensions (mm): 405 x 130

**500-05104****HEAVY DUTY REAR COMBO LAMP****- STOP/PARK/REVERSE/DIRECTION INDICATOR**

Dimensions (mm): 650 x 132

**500-05110****SIDE MARKER LAMP - RED/AMBER**

Dimensions (mm): 120 x 65



500-05112**CLEAR FRONT END OUTLINE MARKER LAMP WITH BUILT IN REFLECTOR**

Dimensions (mm): 85 x 38

**500-05114****CLEAR FRONT END OUTLINE MARKER LAMP WITH RUBBER BOOT & BUILT IN REFLECTOR**

Dimensions (mm): 97 x 48

**500-05120****NARVA SIDE DIRECTION INDICATOR LAMP (AMBER)**

Dimensions (mm): 120 x 52

**500-05015****NARVA LED BLACK AWNING LIGHT****500-05119****NARVA LARGE BASE LED AWNING LIGHT****500-05123****NARVA LED AWNING LIGHT**

A low profile LED lamp that is great for positioning underneath an awning canopy on RVs. It has a classic shape with a white base (9-30VDC, 3W).

Dimensions (mm): 250W x 87H x 17-35D

**500-05124****NARVA FRONT END OUTLINE MARKER & FRONT POSITION LAMP (CLEAR)**

Dimensions (mm): 120 x 52

**500-05125****NARVA REAR END OUTLINE MARKER & REAR POSITION LAMP RED**

Can use 12V or 24V globes. ADR approved.

Dimensions (mm): 120 x 52

**500-05126****CLEAR LENS TO SUIT FRONT END LAMP**

Dimensions (mm): 120 x 52

**FESTOON GLOBES****500-05150****12V 3W GLOBE**

10 pack.

Dimensions (mm): 8 x 28

**500-05152****12V 5W GLOBE**

10 pack.

Dimensions (mm): 11 x 36

**500-05154****12V 5W GLOBE**

10 pack.

Dimensions (mm): 11 x 41

**500-05156****12V 10W GLOBE**

10 pack.

Dimensions (mm): 11 x 36



500-05162**12V 18W GLOBE**

10 pack.

Dimensions (mm): 15 x 41

**500-05164****12V 18W GLOBE**

10 pack.

Dimensions (mm): 15 x 44

**COAST LED LAMPS****500-05500****COAST LED SIDE MARKER LAMP RED/AMBER**

Has a clear polycarbonate lens with a white bracket, a 0.5m wire outlet with blade terminals (12V)

Dimensions (mm): 75 x 40

**500-05502****COAST LED FRONT POSITION LAMP WHITE**

Has a clear polycarbonate lens with a white bracket, a 0.5m wire outlet with blade terminals (12V)

Dimensions (mm): 75 x 40

**500-05504****COAST LED FRONT MARKER LAMP AMBER**

Has a clear polycarbonate lens with a white bracket, a 0.5m wire outlet with blade terminals (12V)

Dimensions (mm): 75 x 40

**500-05506****REAR POSITION LAMP RED**

Has a red polycarbonate lens with a white bracket, 0.5m wire outlet with blade terminals (12V)

Dimensions (mm): 75 x 40

**500-05510****CHROME BRACKET ONLY FOR COAST MARKER LAMP**

Dimensions (mm): 75 x 40

**500-05520****COAST LED LICENSE PLATE LAMP (WHITE)**

Has a polycarbonate lens with dark grey bracket & a 0.5m wire lead outlet. Note: there is no terminal or connector and two lamps are required for ADR compliance (12v DC)

**500-05530****COAST LED REAR CENTRE STOP LAMP RED**

Retro fits current installation hole. Has a 0.1m wire outlet length with blade terminal and insulators.

Dimensions (mm): 360 x 40

**500-05572****COMBO LAMP AMBER/RED/RED**

Has a black housing (12/24V)

Dimensions (mm): 228L x 108W x 40H

**500-05590****LED INTERIOR LAMP**

White with chrome base.

Dimensions (mm): 146L X 70W X 22H



LED REPLACEMENT BULBS**500-05748****LED MR8 REPLACEMENT BULB
(COOL WHITE) 0.8W**

Used to replace traditional MR8 halogen bulbs, it has x6 super bright LEDs and a luminous flux of 60 lumens. Operating on 12V DC, it is the equivalent to a 10W MR8 halogen bulb.

Dimensions (mm): 34 x 25

**500-05751****LED MR16 REPLACEMENT BULB
(COOL WHITE) 4W**

Used to replace the traditional MR16 halogen bulb, has x3 super bright LED's and a luminous flux of 210 lumens. Operating on 12V DC, it is the equivalent to a 45W MR16 halogen bulb.

Dimensions (mm): 50 x 47.8

**500-05752****LED MR11 REPLACEMENT BULB
(COOL WHITE) 1.8W**

Used to replace the traditional MR11 halogen bulb, has x12 super bright LEDs and a luminous flux of 150 lumens. Operating on 12V DC, it is the equivalent to a 24W MR11 halogen bulb.

Dimensions (mm): 34 x 34.6

**500-05753****LED G4 REPLACEMENT
BULB WITH SIDE PIN
(COOL WHITE) 1.6W**

Used to replace the traditional G4 halogen bulbs, it has x6 super bright LEDs and a luminous flux of 120 lumens. Operates on 12V DC.

Dimensions (mm): 35 x 23

**500-05754****LED G4 SINGLE
REPLACEMENT BULB
(COOL WHITE) 1W**

Used to replace reading light bulbs, it has a single super bright LED and a luminous flux of 70 lumens.

Operating on 12V DC, it is the equivalent to a 10W G4 halogen bulb.

Dimensions (mm): 28 x 12

**500-05756****LED G4 REPLACEMENT
BULB WITH SIDE PIN
(COOL WHITE) 1.8W**

Used to replace the traditional G4 halogen bulb, it has x12 super bright LEDs and a luminous flux of 150 lumens. Operating on 12V DC, it is the equivalent to a 27W G4 halogen bulb.

Dimensions (mm): 42 x 30

**500-05757****LED G4 REPLACEMENT
BULB TOWER TYPE
(COOL WHITE) 2.7W**

Used to replace the traditional G4 halogen bulb, it has x18 super bright LEDs and a luminous flux of 210 lumens. Operating on 12V DC, it is the equivalent to a 27W G4 halogen bulb.

Dimensions (mm): 45 x 15

**500-05758****LED T10 REPLACEMENT
BULB (COOL WHITE) 1.35W**

Used to replace the traditional T10 halogen bulb, it has x6 super bright LEDs and a luminous flux of 105 lumens. Operating on 12V DC, it is the equivalent to a 16W T10 halogen bulb.

Dimensions (mm): 37 x 13



500-05760**LED T10 REPLACEMENT BULB (COOL WHITE) 2.7W**

Used to replace the traditional T10 halogen bulb, it has x18 super bright LEDs and a luminous flux of 210 lumens. Operating on 12V DC, it is the equivalent to a 35W T10 halogen bulb.
Dimensions (mm): 55 x 27

**500-05761****LED T10 REPLACEMENT BULB WEDGE TYPE (COOL WHITE) 1.76W**

Used to replace the traditional T10 halogen bulb, it has x13 super bright LEDs and a luminous flux of 150 lumens. Operating on 12V DC.
Dimensions (mm): 43.2 x 10

**500-05762****LED BA15S REPLACEMENT BULB (COOL WHITE) 2.7W**

Used to replace traditional BA15S halogen bulbs, it has a single connector parallel pin and x18 super bright LEDs. Operating on 12V DC, and with a luminous flux of 250 lumens, it is the equivalent to a 36W BA15S halogen bulb.
Dimensions (mm): 49 x 15

**500-05764****LED BA15D REPLACEMENT BULB (COOL WHITE) 2.7W**

Used to replace traditional BA15D halogen bulbs, it has a double connector parallel pin and x18 super bright LEDs. Operating on 12V DC, and with a luminous flux of 250 lumens, it is the equivalent to a 36W BA15D halogen bulb.
Dimensions (mm): 49 x 15

**500-05766****LED FESTOON REPLACEMENT BULB (COOL WHITE) 0.54W**

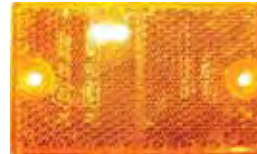
Used to replace traditional festoon halogen bulbs, it has x6 super bright LED's. Operating on 12V DC, and with a luminous flux of 36 lumens, it is the equivalent to a 5.4W festoon halogen bulb.
Dimensions (mm): 42 x 24

**500-05770****LED 2D FLUORESCENT TUBE REPLACEMENT LAMP (COOL WHITE) 10.1W**

Used to replace traditional round fluorescent lamps, it has x60 super bright LEDs. Operating on 12V DC, it has a luminous flux of 900 lumens.
Dimensions (mm): 130 x 15

**REFLECTORS****500-05550****COAST RECTANGULAR SCREW MOUNT REFLECTOR AMBER**

Has an acrylic lens and screw mount.
Dimensions (mm): 72 x 42

**500-05552****COAST RECTANGULAR SCREW MOUNT REFLECTOR RED**

Has an acrylic lens and screw mount.
Dimensions (mm): 72 x 42

**500-05554****COAST RECTANGULAR SCREW MOUNT REFLECTOR CLEAR**

Has an acrylic lens and screw mount.
Dimensions (mm): 72 x 42



4

REFLECTORS

500-05556
REFLECTOR CLEAR RECTANGULAR SELF
ADHESIVE 22 X 85MM ADR APPROVED



500-05558
REFLECTOR RED RECTANGULAR SELF
ADHESIVE 22 X 85MM ADR APPROVED



500-05560
REFLECTOR AMBER RECTANGULAR SELF
ADHESIVE 22 X 85MM ADR APPROVED



500-05580
ROUND REFLEX
REFLECTOR AMBER

Diameter: 57mm
Height: 5mm



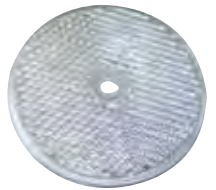
500-05582
ROUND REFLEX
REFLECTOR RED

Diameter: 57mm
Height: 5mm



500-05584
ROUND REFLEX
REFLECTOR CLEAR

Diameter: 57mm
Height: 5mm





The Sphere™ Wireless Lighting Control System is the way of the future. Easily installed on any flat surface, the system requires no drilling, no wires and no hassle—a simple lighting system at its best! How does the system work you ask? Firstly you will need the 6-Channel Receiver and a selection of Wireless Switches (whichever you feel is best for your RV setup). The Receiver will control the lighting for up to six individual zones in your RV e.g. the kitchen or the bathroom. A simple pairing procedure allows for multiple switches to be programmed to each zone and vice versa.

A master OFF function is available with all switches, enabling you to turn all lights off in all zones with one simple button. Alternatively, for a true wireless experience, the remote control can be purchased.

500-07132 SPHERE WIRELESS LIGHT SWITCH REMOTE CONTROL

A six button, multifunction remote control with six available channels enabling the user to tailor the system to their needs. The Remote Control is a handy accessory to keep in your pocket. If, for example, you have spent the day exploring your surroundings, with the Remote Control in your pocket, you can turn your RV lights on as you approach. It will work up to 50m away (provided nothing obscures the signal). Comes with a belt and clip for the user to wear when away from their RV.

Battery Type: CR2032 Lithium Battery
Working Frequency: 433.92MHz



500-07134 SPHERE WIRELESS LIGHT SWITCH REMOTE CONTROL

A six button, multifunction remote control with six available channels enabling the user to tailor the system to their needs.



500-07140 SPHERE PANTRY DOOR SENSOR



500-07200 1-GANG WIRELESS SWITCH

Comes with x2 CR2032 lithium batteries.



500-07204**2-GANG WIRELESS SWITCH**

Comes with x2 CR2032 lithium batteries

**500-07216****5-GANG WIRELESS SWITCH**

Comes with x2 CR2032 lithium batteries

**500-07206****2-GANG WIRELESS SWITCH WITH MASTER OFF**

Comes with x2 CR2032 lithium batteries

**500-07218****5-GANG WIRELESS SWITCH WITH MASTER OFF**

Comes with x2 CR2032 lithium batteries

**500-07208****3-GANG WIRELESS SWITCH**

Comes with x2 CR2032 lithium batteries

**500-07220****6-GANG WIRELESS SWITCH**

Comes with x2 CR2032 lithium batteries

**500-07210****3-GANG WIRELESS SWITCH WITH MASTER OFF**

Comes with x2 CR2032 lithium batteries

**500-07222****6-GANG WIRELESS SWITCH WITH MASTER OFF**

Comes with x2 CR2032 lithium batteries

**500-07212****4-GANG WIRELESS SWITCH**

Comes with x2 CR2032 lithium batteries

**500-07300****6-CHANNEL (12V RECEIVER)****500-07214****4-GANG WIRELESS SWITCH WITH MASTER OFF**

Comes with x2 CR2032 lithium batteries



500-09000
POWER INLET SOCKET 15A IN WHITE



500-09002
POWER INLET SOCKET 15A IN BLACK



500-09004
POWER OUTLET SOCKET 10A IN WHITE



500-09006
POWER OUTLET SOCKET 10A IN BLACK



500-09012
MOUNTING FLANGE 13MM IN WHITE



500-09014
MOUNTING FLANGE 13MM IN BLACK



500-09016
MOUNTING FLANGE 20MM IN WHITE



500-09018
MOUNTING FLANGE 20MM IN BLACK



500-09050
POWER POINT SINGLE 10A DOUBLE POLE



500-09064
DOUBLE POWER POINT 10A DOUBLE POLE DEEP



500-09052
POWER POINT DOUBLE 10A DOUBLE POLE



500-09070
ARCHITRAVE SWITCH 1 GANG WHITE



500-09054
POWER POINT DOUBLE POLE 10A WITH DUAL USB CHARGER



500-09072
ARCHITRAVE SWITCH 1 GANG BLACK



500-09056
QUAD POWER POINT 10A DOUBLE POLE



500-09062
SINGLE POWER POINT DOUBLE POLE DEEP IN WHITE



500-02600**NARVA 12 PIN FLAT TRAILER PLUG**

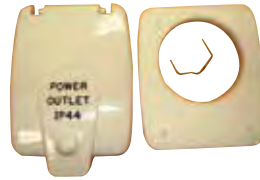
7 pole amp rating per pole 15A at 12V

5 pole amp rating per pole 35A at 12V

**500-02602****NARVA 12 PIN TRAILER SOCKET**

7 pole amp rating per pole 15A at 12V

5 pole amp rating per pole 35A at 12V

**500-03012****FLAP TO SUIT CLIPSAL OLD STYLE OUTLET****500-03020****CLIPSAL (NEW) WHITE EXTERNAL 15A POWER INLET**

A flush inlet with weatherproof flap. (Ensure the cable shroud is secured after cable connections).

**500-03002****FLAP TO SUIT CLIPSAL OLD STYLE INLET****500-03021****CLIPSAL BLACK EXTERNAL 15AMP POWER INLET****500-03010****CLIPSAL WHITE EXTERNAL 10AMP POWER OUTLET (3 PIN)**

10DWP single socket outlet, 250VAC, 10A, double pole with weatherproof flap. The terminal bores accommodate 4 x 2.5sq mm cables. It is auto-switched and complies with AS/NZS 3112.

Protection rating: IP44

Dimensions: 93L x 82W x 26D (mm)

Mounting centres: 70 x 54 (mm)

**500-03022****FLAP TO SUIT CLIPSAL NEW STYLE INLET**

500-03028
CLIPSAL (NEW) BLACK EXTERNAL 10 AMP POWER OUTLET



500-03054
CLIPSAL MOUNTING FLANGE BLACK T/S NEW STYLE INLET



500-03030
CLIPSAL (NEW) WHITE EXTERNAL 10A POWER OUTLET WITH WATERPROOF FLAP

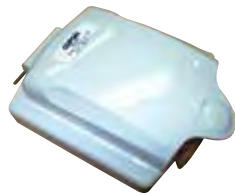


500-03101
CLIPSAL COVER TO SUIT CIRCUIT BREAKER (SLIM)

An 18mm wide cover to suit single circuit breakers (such as 500-03105)



500-03032
FLAP TO SUIT CLIPSAL NEW STYLE OUTLET



500-03102
CLIPSAL COVER TO SUIT CIRCUIT BREAKER

Suitable for covering 36mm wide circuit breakers.



500-03050
CLIPSAL MOUNTING FLANGE TO SUIT NEW STYLE INLET/OUTLET



500-03105
CIRCUIT BREAKER (WITH EARTH LEAKAGE)

Clipsal Max 4 - combination residual current devices and miniature circuit breaker, remember to test these on a monthly basis by operating their inbuilt test button, standard slim type, non-delayed, 240V, 16A - 30mA, 1-phase +N, 6kA, 1 module wide, 50Hz.



500-03052
CLIPSAL MOUNTING FLANGE TO SUIT OLD STYLE INLET/OUTLET



500-03110**CLIPSAL 75 OHM COAXIAL CABLE
SURFACE SOCKET**

These sockets are designed to accommodate solid core conductor coaxial cables with insulation up to 5mm (diameter) for solderless connections.

**500-03120****CLIPSAL 492/32 FIXED POLARITY PLUG
GREY**

Flexible two-pin plugs do not require insulated pins to comply with Australian/New Zealand Standards. This is a flexible plug with two parallel pins, 10A.

**500-03122****CLIPSAL 438/32 FIXED POLARITY CORD
SOCKET GREY**

32V Socket, 15A 2pin polar to suit 1.5mm² (ordinary duty)

**500-03124****402/32 FIXED POLARITY SOCKET WHITE**

Front connecting surface socket with two polarized pins, 32V, 15A.

**500-03200****SINGLE POWER OUTLET DOUBLE POLE
15D WHITE**

Double pole power outlet single, 250V, 10A.

**500-03204****DOUBLE POWER OUTLET DOUBLE POLE
25D WHITE**

Twin (standard) size horizontal mount power outlet with double plate, 250V, 10A.

**500-03206****MOUNTING BLOCK WHITE**

Moulded mounting block, one gang to suit all standard size accessories.

**500-03208****DOUBLE POLE SWITCH 30D WHITE**

Conventional architrave switch, the terminals accommodate 3 x 2.5mm sq. cables. 250V 10A AC only.

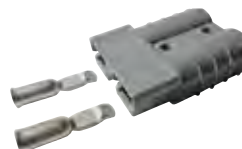
**500-03400****ELECTUS ANDERSON PLUG (50AMP)**

A 50A, high current connector that is used in domestic and industrial applications e.g. 4WD, boating and automotive. It comes with a pair of contacts.

Contact Wire Size: 6AWG

Voltage Rating: 600V (AC or DC)

Max Wire Insulation Diameter: 11mm



COAST 15A EXTENSION LEADS

Coast to Coast's range of heavy duty extension leads now feature a full 360° projecting shroud that protects the face of the socket. Ideal for use in the RV and construction industry, these orange extension leads are made from a 3 core, 1.5mm² cable with a moulded 15A plug and socket. They have been approved and manufactured to Australian Standards. (Not suitable for use with standard domestic power points).

500-03550**COAST 10M, 15A EXTENSION LEAD****500-03552****COAST 15M, 15A EXTENSION LEAD****500-03554****COAST 20M, 15A EXTENSION LEAD****500-03600****CMS SINGLE POWER OUTLET (BEIGE)**

A 10A power outlet that comes with a 20A installation coupler, and is double pole switched.

**500-03602****CMS SINGLE POWER OUTLET (WHITE)**

A 10A power outlet that comes with a 20A installation coupler, and is double pole switched.

**500-03610****CMS DOUBLE POWER OUTLET (BEIGE)**

Power Point Beige.

**500-03620****CMS DOUBLE POWER OUTLET (WHITE)**

Double 10A GPO with 20A installation couplers, Double Pole switched.

**INTERCONNECTING LEAD 20A**

Ordinary duty leads are manufactured from 3 core 2.5sqmm flexible cable. They are rated at 20A terminated with male and female connectors.



| Part Number | Description |
|------------------|---|
| 500-03700 | CMS 500mm interconnecting lead 20A beige |
| 500-03710 | CMS 1000mm interconnecting lead 20A beige |
| 500-03720 | CMS 1300mm interconnecting lead 20A beige |
| 500-03730 | CMS 1500mm interconnecting lead 20A beige |
| 500-03740 | CMS 1700mm interconnecting lead 20A beige |
| 500-03750 | CMS 2000mm interconnecting lead 20A beige |
| 500-03760 | CMS 2300mm interconnecting lead 20A beige |
| 500-03770 | CMS 2500mm interconnecting lead 20A beige |
| 500-03790 | CMS 2700mm interconnecting lead 20A beige |
| 500-03800 | CMS 3000mm interconnecting lead 20A beige |
| 500-03810 | CMS 3200mm interconnecting lead 20A beige |
| 500-03820 | CMS 3300mm interconnecting lead 20A beige |
| 500-03830 | CMS 3500mm interconnecting lead 20A beige |
| 500-03840 | CMS 3800mm interconnecting lead 20A beige |
| 500-03850 | CMS 4000mm interconnecting lead 20A beige |
| 500-03860 | CMS 4200mm interconnecting lead 20A beige |
| 500-03870 | CMS 4500mm interconnecting lead 20A beige |

| Part Number | Description |
|------------------|---|
| 500-03880 | CMS 4700mm interconnecting lead 20A beige |
| 500-03890 | CMS 5000mm interconnecting lead 20A beige |
| 500-03910 | CMS 5500mm interconnecting lead 20A beige |
| 500-03920 | CMS 5700mm interconnecting lead 20A beige |
| 500-03930 | CMS 6000mm interconnecting lead 20A beige |
| 500-03940 | CMS 6300mm interconnecting lead 20A beige |
| 500-03950 | CMS 6500mm interconnecting lead 20A beige |
| 500-03960 | CMS 6800mm interconnecting lead 20A beige |

CIRCUIT BREAKER CONNECTING LEAD 20A BEIGE



| Part Number | Description |
|------------------|--|
| 500-04000 | CMS 1000mm Circuit breaker connecting lead 20A beige |
| 500-04010 | CMS 2000mm Circuit breaker connecting lead 20A beige |
| 500-04050 | CMS 3500mm Circuit breaker connecting lead 20A beige |
| 500-04070 | CMS 4400mm Circuit breaker connecting lead 20A beige |
| 500-04100 | CMS 6300mm Circuit breaker connecting lead 20A beige |

500-04150

CMS CIRCUIT BREAKER LOOM ASSY W/H REMOTE EARTH WIRE

The CMS Circuit Breaker with Loom Assembly is a protective device that combines two functions, it acts as a residual current device and as a circuit breaker. It comes with a remote earth wire and features CMS' soft-wire interconnecting leads for a fast and simple installation.

- > 240V
- > 16A-30mA
- > 4.5kA
- > SAA120741EA AS/NZs61009.1



500-04200

CMS MOUNTING BLOCK

Mounting block for power points and switch plates beige.



500-04202

CMS MOUNTING BLOCK (WHITE)

Mounting block for power points and switch plate.



500-04210

CMS SINGLE SWITCH PLATE

Single switch plate, beige only. (Extra low voltage only eg 12V, Not for 240V)



500-04220

CMS DOUBLE SWITCH PLATE

Double switch plate, beige only. (Extra low voltage only eg 12V, Not for 240V)



500-04230

CMS TRIPLE SWITCH PLATE

Triple switch plate, beige only. (Extra low voltage only eg 12V, Not for 240V)



500-04250

CMS TV ANTENNA OUTLET BEIGE

Connects your TV to the aerial on your RV's roof. the wall of your RV.



500-04262**CMS 1-IN 2-OUT DOUBLE ADAPTOR (CLEAR)**

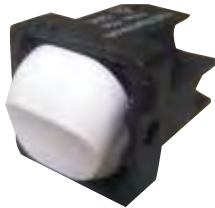
J Series

**500-04280****CMS MOUNTING SHROUD**

CMS mounting shroud for outlets and switch plates (beige).

**500-04300****CMS 2-WAY 10A SWITCH**

250V 2-way with looping terminal (without indicator).

**500-04310****CMS 10A DOUBLE POLE SWITCH SOCKET**

Suitable for use with CMS interconnecting leads only, direct connection.

Recess Required: 61mm

250V, 50Hz, 20Amp installation coupler

**500-04312****CMS 15A POWER INLET**

Suitable for use with CMS interconnecting leads only, direct connection.

Recess Required: 61mm

250V, 50Hz, 20A installation coupler.

**500-04314****CMS TWIN DOUBLE POLE AUTO SOCKET**

A 20A installation coupler with a 10A socket outlet. (250V, 50Hz)

**500-04320****CMS 3 WAY ADAPTOR (BEIGE)**

20A, 240V, IP4X

**CMS POWER OUTLETS**

240v CMS Electrical products are not your usual fittings as they feature a soft-wire install with interconnecting leads instead of the hard-wire install of standard fittings. The advantage to this is that it is fast and simple to install or un-install as it is just a coupling connection to a lead rather than hard-wiring actual wire to connect the fitting.

500-04400**DOUBLE NATURAL - WHITE**

500-04402**SINGLE N/W + DUAL 4A USB W/12VDC TERMINAL****500-04501****AMP-FIBIAN RV-02MAX 15AMP TO 10AMP ADAPTER**

The Ampfiban adaptor allows for a 15A load (e.g. that of a caravan) to connect to a standard household power point (10A). With upgraded features such as being waterproof to IP55, being able to accept leads up to 12mm in diameter and with a new H-Class rating, the Ampfiban is the safe option to connect to domestic outlets. It will automatically trip at 10A if the power outlet becomes overloaded. Designed and made in Australia, the Ampfiban comes with RCD and overload protection, as well as a two year warranty.

**500-04503****AMP-FIBIAN MINI 15AMP TO 10AMP ADAPTER**

Suitable for use where a waterproof rating is not essential, the Ampfiban Mini has all the same features as its big brother but with an IP33 rating. It has all the essentials such as RCD and overload protection, and a 10A circuit breaker which prevents overloading by cutting the power if it exceeds 10A (2400W). Designed and made in Australia, it comes with a two year manufacturer's warranty.

Specifications

Class: L - suitable for DIY/Handyman jobs

RCD: 30mA, 10kA fault current

Power: 220-240VAC, 50-60Hz

**500-04504****ELECTUS PORTABLE RCD WITH 15A TO 10A MAINS PLUG CONVERSION**

Featuring a 10A circuit breaker/RCD for overload protection, this portable RCD is ideal if you have a device with a 15A mains plug but no 15A power outlet available.

Voltage: 240V AC, 50Hz

Max Load: 2400W, 10A

Rated Residual Current: 30mA

Dimensions: 180H x 135D x 124W (mm)

**500-04506****AMP-FIBIAN RV-PLUS 15AMP TO 10AMP ADAPTER WITH OVERLOAD**

The Ampfiban RV Plus is the perfect power adapter for caravan/RV owners. Compact for travel, and weatherproof for outdoor use, it lets 15A devices connect legally to 10A power points and includes fast acting earth leakage safety protection.

Features

- > It is water resistant to IP-55 (jets of water from all directions) and made from impact resistant plastic.
- > Works with ordinary and heavy-duty caravan leads up to 12mm diameter.
- > 240V 10A 2400W circuit breaker
- > R.C.D. for personal protection
- > Padlock attachment point locks lid
- > Power indicator light in socket
- > Certified to comply with Australian Standards AS/NZS-3190 & AS/NZS-3001
- > Two year warranty
- > Designed & Made in Australia)



500-04520**POD 15 AMP TO 10 AMP ADAPTER**

Designed in South Australia, the POD is great for the RV and tradie industry. Its yellow and compact housing, makes it a portable powerhouse resulting in an efficient 15Amp to 10Amp power adapter. It has water ingress protection (IP55) and has been tested to comply with AS/NZ3190:2011. Safety comes first with the POD, it also features RCD overload protection as well as an inbuilt circuit breaker for current overload protection. Other handy features include a clear lid for easy inspection, a cord clamp to ensure your domestic supply cannot pull free and a convenient hook for hanging when in use. Comes with a one year manufacturer's warranty.

Specifications

Max loading: 10A

Suits ordinary duty 15A leads

Features a 1.5m lead

**NARVA ACCESSORY SOCKETS****500-05070****SURFACE MOUNT ACCESSORY SOCKET**

Ideally suited for RV and marine type applications, the socket has a dustproof rubber cover and a plastic housing. It is suitable for interior or exterior installations, however in the case of an exterior fitment, the socket opening should point towards the ground. Comes in a single blister pack.



Amperage Rating: 20A at 12V, 10A at 24V

Dimensions (mm): 80 x 50

500-05072**NARVA SURFACE MOUNT ACCESSORY (BLACK)**

A heavy duty socket featuring a dustproof cover and a moulded plastic housing (this allows for easy installation to interior or exterior panels).

Rating: 20A at 12V, 10A at 24V

Dimensions (mm): 80 x 55



Features dustproof cover and heavy-duty construction. Can be installed with or without the mounting panel. The fitting mechanism allows installation into interior or exterior panels including steel and aluminium. Can be installed with or without the mounting panel. Moulded housing allows fitment to interior or exterior panels for easy installation.

500-05304**ACCESSORY SOCKET H/D**

Amperage Rating: 20A at 12V, 10A at 24V

Mounting Opening: 29mm diameter

**500-05312****ACCESSORY SOCKET DUAL USB H/D**

Output: 5V, 2.5A

Mounting Opening: 29mm diameter

**500-05318****ACCESSORY SOCKET TWIN ACCESSORY/ DUAL USB H/D**

USB Output: 5V, 2.5A

Mounting Opening: 29mm diameter

**500-05322****ACCESSORY SOCKET SURFACE MOUNT DUAL USB H/D**

USB Output: 5V, 2.5A



500-05324**ACCESSORY SOCKET SURFACE BLACK MOUNT TWIN SOCKETS H/D**

Amperage Rating: 20A at 12V, 10A at 24V per socket

**500-05325****ACCESSORY SOCKET WHITE SURFACE MOUNT TWIN SOCKETS H/D**

Amperage Rating: 20A at 12V, 10A at 24V per socket.

**500-05332****ACCESSORY SOCKET SURFACE MOUNT TWIN ACCESSORY / DUAL USB H/D**

Accessory Socket: 20A at 12V, 10A at 24V

USB Output: 5V, 2.5A

Mounting Opening: 9mm diameter per socket

**500-05334****ACCESSORY SOCKET WHITE SURFACE MOUNT TWIN ACCESSORY / DUAL USB H/D**

Accessory Socket: 20A at 12V, 10A at 24V

USB Output: 5V, 2.5A

**500-05340****ACCESSORY SOCKET H/D AND 12/24V DC L.E.D VOLT METER**

Easy to read L.E.D Volt Meter displays accurate battery voltage level.

Accessory Socket: 20A at 12V, 10A at 24V

Volt Meter Range: 6-33V DC



COAST SOLAR PANELS



Coast to Coast's solar panels are made from 100% silicon wafers, not cut-offs like some lesser quality panels. They also have a silicon nitride (SiN) antireflective coating to ensure more light is absorbed in all weather conditions.

Features

- > By-passed diodes to minimise power drops caused by shade
- > An anodised aluminium frame to withstand rust
- > Anti-reflective, high transparency tempered glass for durability

500-06117**SOLAR PANEL 100 WATT MONO-CRYSTALLINE SLIMLINE**

Mono Crystalline 100W Panel.

Max Power Voltage: 18.0V

Max Power Current: 6.0A

Dimensions: 1310mm x 506mm x 35

**500-06125****MONO CRYSTALLINE 120W PANEL SLIMLINE**

Max Power Voltage (Vpm): 17.6V

Max Power Current (Ipm): 6.8A

Dimensions: 1196m x 674mm x 40mm

Weight (kg): 10.8



500-06131**SOLAR PANEL 160 WATT MONO-CRYSTALLINE**

Mono Crystalline 160W Panel.

Max Power Voltage: 18.0V

Max Power Current: 8.89A

Dimensions: 1482mm x 674mm x 35mm

**500-06150****SOLAR PANEL 7A REGULATOR (12V/7A)**

Protects your battery from being over and under charged. Handles up to 7A (100W solar panel) of charging and has a convenient LED indicators for easy monitoring.

**500-06160****SOLAR PANEL 30A REGULATOR (12V/30A)**

Handles up to 30A (360W solar panel) of solar charging and has a large LCD for monitoring.

**500-06170****SOLAR PANEL MOUNTING BRACKETS (PACK 4)**

Suitable for use when installing any of the Coast to Coast solar panels. Note that in the case of the 150W solar panel, two sets are recommended to provide extra support.

**500-06172****SOLAR PANEL UNIVERSAL MOUNT KIT**

Sold as a kit containing: x4 corner mounts (top and bottom), x2 centre mounts (top and bottom), x20 locking screws and x40 height adjusting screws (x20 large for a 35mm frame and x20 small for a 40mm frame).

**500-06175****SOLAR PANEL 10A CHARGE CONTROLLER**

SPHERE TYRE INFLATORS**500-06300****SPHERE SWIFT TYRE INFLATOR 28L/MIN**

Ideal for 4x4s, SUVs, caravans and motorhomes. Inflates 4x4 tyre in 6 minutes and a car tyre in just 2.5 minutes. Simple set up - just rotate dial to set pressure. Back lit digital display makes it easy to set your desire pressure Automatically stops when the pressure is reached LED light built in for ease of use at night Long cables to reach tyres all around the vehicle. Comes with three piece adaptor kit

Product Dimensions (mm): H168 x W238 x D123**Weight (kg):** 2.026**Voltage:** 12V DC**Watts:** 180W**500-06302****SPHERE RAPID FLOW TYRE INFLATOR 33L/MIN**

Ideal for 4x4s, SUVs, caravans and motorhomes. Powerful inflation from a 12V socket - 4x4 tyre inflates in 5 mins, car tyre in 2 mins. Back lit digital display makes it easy to set your desire pressure Automatically stops when the pressure is reached LED light built in for ease of use at night Long cables to reach tyres all around the vehicle. Comes with three piece adaptor kit.

Product Dimensions (mm): H172 x W260 x D128**Weight (kg):** 2.696**Voltage:** 12V DC**Watts:** 180W**500-06306****NARVA H/DTY 5MT ACCESSORY EXTENSION LEAD****500-06500****NARVA TRAILER PLUG 6 PIN SMALL ROUND PLASTIC BLISTER****500-06504****NARVA TRAILER PLUG 7 PIN SMALL ROUND PLASTIC BLISTER PACK****500-06506****NARVA CAR SOCKET 7 PIN SMALL ROUND PLASTIC BLISTER PACK****500-06512****NARVA TRAILER PLUG 7 PIN LARGE ROUND PLASTIC BLISTER PACK****500-06514****NARVA TRAILER PLUG 7 PIN LARGE ROUND PLASTIC BLISTER PACK**

500-06520**NARVA TRAILER PLUG 7PIN FLAT
BLISTER PACK****500-06522****NARVA CAR SOCKET 7 PIN FLAT BLISTER
PACK****500-06532****NARVA TRAILER ADAPTOR 7 PIN ROUND
CAR TO 6 PIN ROUND VAN****500-06536****NARVA TRAILER ADAPTOR 7 PIN ROUND
CAR TO 7 PIN FLAT VAN****500-06540****NARVA TRAILER ADAPTOR 7 PIN FLAT
CAR TO 7 PIN ROUND VAN****500-06544****NARVA TRAILER ADAPTOR 7 PIN LARGE
ROUND CAR TO 7 PIN FLAT VAN****500-06548****NARVA TRAILER ADAPTOR 7 PIN FLAT
CAR TO 7 PIN LARGE ROUND VAN****500-06552****NARVA TRAILER ADAPTOR 7 PIN LARGE
ROUND CAR TO 7 PIN SMALL ROUND VAN****500-06560****NARVA TRAILER ADAPTOR 7 PIN SMALL
ROUND CAR TO 7 PIN LARGE RND VAN****500-06562****NARVA HEAVY DUTY 50AMP CONNECTOR
HOUSING**

Has an impact resistant polycarbonate housing and silver plated solid copper terminals.

Amperage rating: 50A**Suits cable size:** 8mm²**Operating temperature:** -20°C to 105°C

500-02600**NARVA 12 PIN FLAT TRAILER PLUG**

7 pole amp rating per pole 15A at 12V

5 pole amp rating per pole 35A at 12V

**500-02602****NARVA 12 PIN TRAILER SOCKET**

7 pole amp rating per pole 15A at 12V

5 pole amp rating per pole 35A at 12V

**500-90004N****ELECTREX 10M CARAVAN SUPPLY LEAD STANDARD**

A supply lead for caravans and motorhomes allowing for connection to camp site power supply posts. Comes complete with a plug, connector and a strain relief dog bone.

**500-90006N****ELECTREX 10M ANGLED CARAVAN SUPPLY LEAD**

A supply lead for caravans and motorhomes allowing for connection to camp site power supply posts. Comes complete with a plug, angled connector and a strain relief dog bone.

**500-90008N****ELECTREX CARAVAN SUPPLY ADAPTOR**

Allows you to provide power to your caravan or motorhome from a domestic power point. The Caravan Supply Adaptor has a 10A MCB to protect the domestic power supply.

**500-90010N****ELECTREX 10M CARAVAN SUPPLY LEAD WITH C/W J/BOX**

Power cord locker with a 10m fixed supply lead.

**500-90012N****ELECTREX EXTERNAL INLET PLUG**

A 240V blue surface mounting IP67 inlet. Rating: 16A

Pins: 2P + E

Earth Position: 6H

**500-90014N****ELECTREX PLUG-FEMALE**

Optima Series IP67 connector. It is a blue 240V connector rated at 16A.

Pins: 2P + E

Earth Position: 6H Ins. Perforation



500-90016N

ELECTREX PLUG-MALE

An IP44, blue, 240V plug, rated at 16A.

Pins: 2P + E

Earth Position: 6H Ins. Perforation



500-90022N

ELECTREX FEMALE PLUG 90 DEGREE (FOR FLUSH MOUNT INLET)

Optima Series IP44 connector. It is a blue 240V connector rated at 16A.

Pins: 2P + E

Earth Position: 6H (Right Angle)



COAST TO COAST CABLE TIES

High quality self-locking nylon cable ties available in black or white in 11 different sizes.



| Part Number | Description |
|-------------|--------------------------------------|
| 500-08000 | 2.5x150mm Cable Tie Black 100pcs/Bag |
| 500-08004 | 2.5x200mm Cable Tie Black 100pcs/Bag |
| 500-08008 | 3.6x150mm Cable Tie Black 100pcs/Bag |
| 500-08012 | 3.6x200mm Cable Tie Black 100pcs/Bag |
| 500-08016 | 3.6x250mm Cable Tie Black 100pcs/Bag |
| 500-08020 | 3.6x300mm Cable Tie Black 100pcs/Bag |
| 500-08024 | 4.8x200mm Cable Tie Black 100pcs/Bag |
| 500-08028 | 4.8x250mm Cable Tie Black 100pcs/Bag |
| 500-08032 | 4.8x300mm Cable Tie Black 100pcs/Bag |
| 500-08036 | 4.8x360mm Cable Tie Black 100pcs/Bag |
| 500-08002 | 2.5x150mm Cable Tie White 100pcs/Bag |
| 500-08006 | 2.5x200mm Cable Tie White 100pcs/Bag |
| 500-08010 | 3.6x150mm Cable Tie White 100pcs/Bag |
| 500-08014 | 3.6x200mm Cable Tie White 100pcs/Bag |
| 500-08018 | 3.6x250mm Cable Tie White 100pcs/Bag |
| 500-08022 | 3.6x300mm Cable Tie White 100pcs/Bag |
| 500-08026 | 4.8x200mm Cable Tie White 100pcs/Bag |
| 500-08030 | 4.8x250mm Cable Tie White 100pcs/Bag |
| 500-08034 | 4.8x300mm Cable Tie White 100pcs/Bag |
| 500-08038 | 4.8x360mm Cable Tie White 100pcs/Bag |
| 500-08042 | 7.6x400mm Cable Tie White 100pcs/Bag |
| 500-08040 | 7.6x400mm Cable Tie Black 100pcs/Bag |

4

CABLE TIES



Coast to Coast

coastrv.com.au

CAFRAMO FANS



Coast to Coast's range of high quality Caframo fans are researched, designed, developed and manufactured in Canada for the world.

Caframo fans are constructed with the highest quality and greatest care to deliver high-end, unique products boasting features to increase your comfort. All of the fans can be either surface or flush mounted and are available in black or white.

SIROCCO II

The all new Sirocco II fan features a unique gimbaled design that allows 360° airflow with versatile 12/24 Volt auto-sensing capability. The improved control layout, increased timer settings and quieter operation make the Sirocco II the perfect choice for caravanning in comfort.

Colours: Black and White

Product Size (mm): 90(L) x 241(W) x 305(H)

Product Weight: 1.2kg

500-10000

CAFRAMO SIROCCO II 12/24V WHITE 7" GIMBAL FAN WITH 3 SPEED



500-10002

CAFRAMO SIROCCO II 12/24V BLACK 7" GIMBAL FAN WITH 3 SPEED



BORA

The quietest and most powerful fan in its class! The model 748 Bora 12 Volt fan is designed to deliver the features needed to solve any airflow challenge. The Bora features a long-life motor with center push control, grills on front and back and built-in handle for easy up/ down or side-to-side positioning.

Colours: Black and White

Product Size (mm): 90(L) x 165(W) x 241(H)

Product Weight: 0.7kg

500-10004

CAFRAMO BORA 12V WHITE 6" FAN WITH 3 SPEED

**500-10006**

CAFRAMO BORA 12V BLACK 6" FAN WITH 3 SPEED

**MAESTRO**

Building on the popularity of the original Bora™ fans, the Maestro™ boasts an improved design along with a bright LED for use at night. Equipped for wall mounting, its convenient wired remote pendant control can be located up to six feet away from the fan.

Colours: Black and White

Product Size (mm): 97(L) x 165(W) x 241(H)

Product Weight: 0.7kg

500-10008

CAFRAMO MAESTRO 12V WHITE 6" VARIABLE SPEED FAN WITH LIGHT AND WIRED CONTROL

**500-10010**

CAFRAMO MAESTRO 12V BLACK 6" VARIABLE SPEED FAN WITH LIGHT AND WIRED CONTROL



BRIGGS & STRATTON GENERATORS



Lightweight and portable inverter generators are great for travel and recreational activities. To help ensure consistent power at any speed, DC power is produced and the onboard computer converts it to high quality AC output. This process helps maintain steady, accurate, and clean power output at a level similar to what you experience in your home. The PowerSmart Series™ Inverter Generators produce less than 3% total harmonic distortion making it safe for laptop computers, TVs and game systems.

500-30654**3000 WATT INVERTER GENERATOR**

The P3000 PowerSmart Series™ Inverter Generator by Briggs & Stratton takes portable power generation to the next level. Inverter technology makes it safe for sensitive electronics. The computer controlled technology supplies smooth, steady power - and adjusts engine speed accordingly to suit your power needs and save fuel. Twin cushioned carrying handles, a telescopic style handle and wheels make it easy to move. Plus the on-board LCD StatStation® display keeps you informed about power use, run time and maintenance reminders. Now that's smart power.

- > 171cc 4-stroke OHV engine
- > 2 x 240V 15amp sockets (Water Ingress Protection IP44)
- > 12V/5A auxiliary sockets
- > Parallel connector port (Optional kit to join 2 sets together)
- > Statstation™ Digital Display
- > Computer controlled inverter technology for a quiet and efficient engine
- > USB charging port
- > On board monitoring system
- > Overload alarm, circuit breaker and low oil sensor (engine protection)
- > 3 Years Limited Domestic Warranty (conditions apply)

Specifications

Running Watts: 2,600
 A/C Starting Watts: 3000
 Engine displacement: 171
 Fuel Tank Capacity (Litres): 5.7
 Noise Level: 58Db
 AC Outlet: 230 Volts/15Amp
 DC Outlet: 12Volt/5Amp
 Weight: 44Kg
 Length: 66cm
 Width: 36cm
 Height: 53cm



500-30697**2200 WATT INVERTER GENERATOR**

The P2200 PowerSmart Series™ Inverter offers an affordable, reliable power source from a brand you can trust. Whether you are holidaying, camping, caravanning or require back up power for light trade applications, the PowerSmart inverter generator is ideally suited to meet your needs. With easy starting and quieter running you can enjoy the little conveniences of home anywhere you are - lights, fans, a coffee maker, laptop or TV.

- > 105.6cc 4-stroke OHV engine
- > 2 x 240V 15amp sockets (Water Ingress Protection IP44)
- > 12V-5A fully regulated auxiliary outlet with USB adapter
- > Parallel connector port (Optional kit to join 2 sets together)
- > Computer controlled inverter technology for a quiet and efficient engine
- > Main circuit reset (overload) - no need to switch machine off
- > Overload alarm, low oil alert and shutdown (engine protection)
- > 3 Years Limited Domestic Warranty (conditions apply)

Specifications

Running Watts: 1,700

Starting Watts: 2200

Engine (OHV): 4-Stroke

Engine displacement: 105.6

Fuel Tank Capacity (Litres): 3.7

Noise Level: 58DbAC

Outlet: 230 Volts/15AmpDC

Outlet: 12Volt/5Amp

Weight: 24kg

Length: 53cm

Width: 32cm

Height: 44cm

**500-07600****GENERATOR SLIDE ASSEMBLY**

Most applications require increased power for start-up. When running multiple items please refer to the table below to calculate your power requirements.

| Application | Starting Surge | Running Wattage | P2200 | P3000 |
|---------------------------|----------------|-----------------|-------|-------|
| Air Con (Inverter) 5.2kW | 1500 | 1500 | • | • |
| Air Con (Portable) 2.8kW | 2100 | 1200 | | • |
| Refrigerator/Freezer | 1350 | 550 | • | • |
| Microwave | 1000 | 1000 | • | • |
| Electric Stove 8" Element | 2100 | 2100 | | • |
| Mobile Phone Charger | 25 | 25 | • | • |
| LCD TV 32" | 75 | 75 | • | • |
| Plasma TV 50" | 500 | 500 | • | • |
| Laptop | 250 | 250 | • | • |
| Radio | 10 | 10 | • | • |
| Portable Heater | 1500 | 625 | • | • |
| Light Bulb | 75 | 75 | • | • |
| Slow Cooker | 240 | 240 | • | • |
| Coffee Maker | 1300 | 1300 | • | • |

500-36330**PARALLEL KIT**

Connect two PowerSmart Series™ Inverter Generators together using the Parallel Kit. Whether you have two-P2200 Inverters, two-P3000 Inverters, or one of each, the Parallel Kit gives you more continuous power to operate your RV air conditioner, lights, cell phone chargers, and other portable appliances at the same time.

500-27346

**BRIGGS & STRATTON 4-STROKE
LET'S GET STARTED KIT**



500-27390

**BRIGGS & STRATTON OIL SAE 30
- 600ML**



500-36344

**BRIGGS & STRATTON P2200 WATER
RESISTANT COVER**



500-36345

**BRIGGS & STRATTON P3000 WATER
RESISTANT COVER**





Briggs & Stratton pressure washers now give you the power to keep sidewalks, driveways, cladding and wood looking like new. Strip away mould stains, tough oil stains and chipped paint with ease.

500-36370

BRIGGS & STRATTON ELECTRIC PRESSURE WASHER

- > 1880 PSI at a flow rate of 6.6L/per min
- > High pressure for a variety of cleaning jobs
- > Instant start/stop system- Only runs when spray gun trigger is pulled
- > Adjustable fan jet lance for greater versatility
- > Stainless steel piston axial pump with aluminium head offers corrosion resistance
- > Turbo nozzle wand cleans faster than a standard spray tip
- > On board detergent dispenser
- > 1 Year Warranty



500-36374

BRIGGS & STRATTON STEAM ELECTRIC PRESSURE WASHER

- > 2030 PSI
- > Integrated Steam Cleaner - Great for breaking down grease and oil for easy cleaning
- > Instant Start/Stop System - Only Runs when the spray gun trigger is pulled
- > Turbo Nozzle Wand - Cleans up to 40% faster than a standard spray tip
- > Metal Wand with 3 Quick-Connect Spray Tips - 0°, 15° & 40°
- > Onboard Chemical Detergent Tank - Easily Store and dispense cleaning detergent
- > 6 meter High-Pressure Hose
- > 1 Year Warranty



500-36372

BRIGGS & STRATTON ELECTRIC PRESSURE WASHER

- > 2030 PSI at a flow rate of 7.5L/per min
- > High pressure for a variety of cleaning jobs
- > Instant start/stop system- Only runs when spray gun trigger is pulled
- > Adjustable fan jet lance for greater versatility
- > Stainless steel piston axial pump with aluminium head offers corrosion resistance
- > Turbo nozzle wand cleans faster than a standard spray tip
- > On board detergent dispenser
- > 1 Year Warranty

