

SECTION 5



CARAVAN HARDWARE

(Product Group - 600)

Coast Access Doors	220 - 222
Grab Handles and Cabin Hooks	222 - 223
Thetford Service Doors	223 - 224
Rosettes, Nickels and Door Locks	225 - 227
Valterra Access Hatches	227
Window Parts	227 - 228
DGN Hinges	228 - 229
Caravan Cleaners, Touch Up Paint and Sealers	229 - 234

HATCHES & VENTS

(Product Group - 650)

Elixir Mini Vent	234
Ventline Vents and Spares	234 - 236
Unimaxx Replacement Vent Lids	235 - 236
Four Seasons Hatch and Spares	236 - 237
Fantastic Vents and Spares	237 - 238
Fiamma Hatches, Vents and Hatch Spares	238 - 240
MaxxAir Ventilation	240 - 241
Exterior, Rotary and Scupper Vents	241 - 242

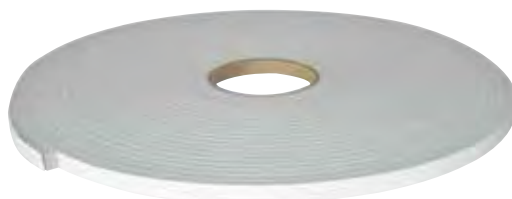
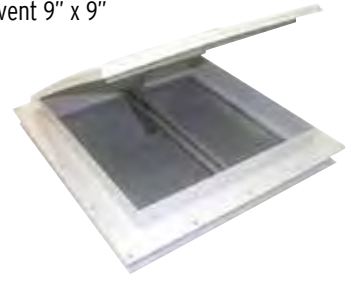
**600-06210
STRIP CAULKING**

An ideal sealant for face fixed window flanges, edge moulds etc. It is easily thumbbed into place and smoothed with a finger in instances when a soft, non-hardening material is needed. It is waterproof and will not shrink. (Sold per 16' roll - 4.9m)

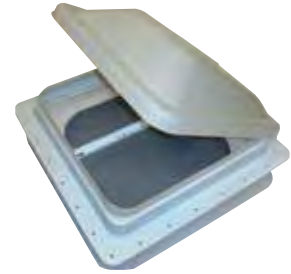
**TAPE FOAM GREY PVC SEALING**

This general purpose foam tape is manufactured for use in applications requiring positive seals on irregular surfaces or when flex and conformability to tight radius curves are critical considerations.

- > Low density foam is easy to compress and conformable, but is still strong and resilient
- > Insulates against temperature, sound and vibration
- > Formulated from durable Poly Vinyl Chloride (PVC) for long service life.
- > Closed cell structure completely seals our air, moisture, light and dust when compressed at least 30%.

**250-02500
6.4MM THICK X 12MM X 15.2M****250-02502
9.5MM THICK X 12MM X 7.0M****250-02504
12.7MM THICK X 12MM X 7.0M****250-02506
6.4MM THICK X 18MM X 15.2M****250-02508
9.54MM THICK X 18MM X 7.0M****250-02510
12.7MM THICK X 18MM X 7.0M****650-00070
ELIXIR MINI VENT**
Elixir mini vent 9" x 9"**650-00080
VENTLINE 14" X 14" METAL VENT**

This vent does not have a fan, but does have an extra strong galvanized steel roof flanges in a painted white finish. It has a screw-in mount, while the dome is styled with an aerodynamic shape in white polypropylene. The screen frame has been designed with stylish radius corners (curved) and comes in two removable pieces which is great for cleaning.

**650-00090
VENTLINE 14" X 14" METAL VENT
(WITH FAN)**

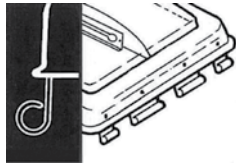
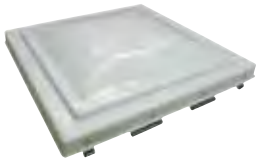
This Ventline Vent has a 12V DC motor making it able to power a fan for faster air delivery. Like 650-00080, it also has extra strong galvanized steel roof flanges in a painted white finish and mounts onto the roof of your RV with screws. The dome is also white with an aerodynamic design. The screen frame also has radius corners and consists of two removable pieces.
Cut-out required: 14 1/4" (36.2cm)



REPLACEMENT PLASTIC LID (VENTS)

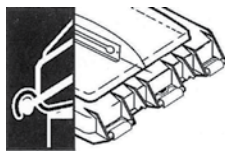
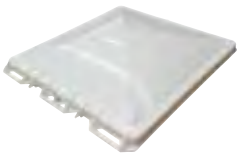
650-00210

**REPLACEMENT PLASTIC LID FOR OLD
STYLE JENSEN 14" X 14" VENT**



650-00212

**REPLACEMENT PLASTIC LID FOR
NEW STYLE JENSEN 14" X 14" VENT**



650-00214

**JENSEN HATCH 14"X14" BLACK LID
ONLY T/S NEW TYPE**

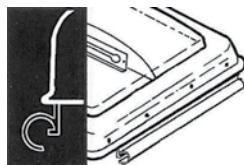
Camco's Black Polypropylene Replacement Vent Lid for Jensen with pin hinge is impact-resistant and comes preassembled. It includes all mounting hardware for quick, easy installation on all 14" x 14" RV vents. Hardware is rust resistant.

- > Made of durable, impact resistant polypropylene
- > Includes rust-resistant mounting hardware
- > Fits all 14 inch x 14 inch RV vents and replaces Jensen pre 1994 pin style vents
- > Reinforced center bar for added strength and stability
- > Vent lid is pre-assembled for quick and easy installation



650-00230

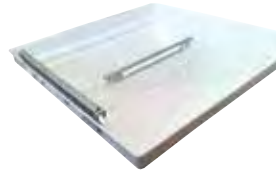
**REPLACEMENT PLASTIC LID FOR OLD
STYLE ELIXIR 14" X 14" VENT**



650-00240

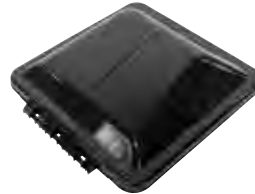
**REPLACEMENT PLASTIC LID FOR
VENTLINE 14" X 14" VENT**

(to suit old metal clip connection)



650-00250

**VENTLINE VENT REPLACEMENT LID
- SMOKE**



650-00450

VENTLINE REPLACEMENT LID

White lid only, to suit new style plastic clip connection.



UNIMAXX UNIVERSAL VENT LID REPLACEMENT KIT

Replace damaged or old vent Lids with one, easy-to-install universal vent lid. The Unimaxx universal vent lid takes the hassle out of having to know what year your current lid was manufactured and who manufactured it! Replaces damaged vent lids on Elixir, Hengs, Jensen, Ventline and other roof vent assemblies.

- > Eliminates the need to match hinge types.
- > Preassembled
- > Includes all mounting hardware
- > Uv enforced polypropylene
- > Rust resistant hardware
- > Available in White and Smoke

650-00260

**UNIMAXX UNIVERSAL VENT LID
REPLACEMENT KIT WHITE**



650-00262
UNIMAXX UNIVERSAL VENT LID
REPLACEMENT KIT SMOKE



JENSEN SPARES

650-00400
WINDER HANDLE FOR JENSEN HATCH



650-00404
FAN BLADE FOR JENSEN HATCH



VENTLINE SPARES

650-00452
BLACK ELEVATING KNOB
 Replacement knob only to open/close the vent lid.



650-00454
VENTLINE 6" FAN BLADE
 A plastic fan blade to suit the Ventline 14" x 14" vent.



650-00456
VENTLINE REPLACEMENT FLY SCREEN
 With plastic framework and metal mesh, this replacement fly screen suits 14" x 14" Ventline vents with or without a fan.



650-00458
VENTLINE OPERATOR SHORT SHAFT
 Suits the old style connection, (spring locking clip with crank).



650-00460
VENTLINE OPERATOR SHORT SHAFT
 Suits the new style connection, has a plastic slide clip with crank.



AUSTRALITE FOUR SEASONS
HATCH SPARES

650-00554
FOUR SEASONS LIFT MECHANISM



650-00556
FOUR SEASONS HATCH FLY SCREEN



650-00560**INTERNAL FRAME TO SUIT NEW FOUR SEASONS HATCH 50MM**

(part number 650-00595)

**650-00562****INTERNAL FRAME TO SUIT NEW FOUR SEASONS HATCH - 70MM**

(part number 650-00595)

**650-00597****AUSTRALITE FOUR SEASONS EVOLUTION HATCH 600 X 600**

- > Fully designed and tested in Australia for Australasian conditions
- > Retains Camec's famous 4 season functionality
- > Classic 660x660 square cutout means no change, and also makes it retrofittable to upgrade your old 4 seasons hatch
- > Passive ventilation increased to 223cm² (was 161cm² on previous model)
- > Ergonomic vent controls
- > Each door has three opening positions (closed, rain mode, fully open)
- > New elegant design, matching the 500x700 4 Seasons Evolution Roof Hatch
- > Tough ASA construction resulting in improved sealant adhesion
- > Easy installation from inside the RV
- > Air Deflector integrated into housing.
- > No additional components required.

**FANTASTIC VENTS****650-01011****FANTASTIC VENT 2250 WITH WHITE ARCHED LID**

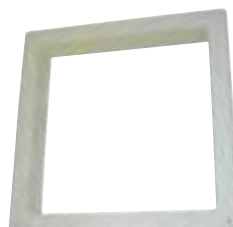
A ceiling controlled fan with three fan blade speeds. It fits the standard 14" x 14" opening and has a manual lift dome. It operates quietly and features a built-in thermostat, reversible airflow and a high profile base. Comes with a 2yr manufacturer's warranty.

Weight: 12lbs (5.4kg)**650-01021****FANTASTIC VENT 3350 WITH WHITE ARCHED LID**

A ceiling controlled fan with three fan blade speeds. It fits the standard 14" x 14" opening and has a power lift dome with a manual override in case of emergency. It operates quietly and features a built-in thermostat, reversible airflow, an automatic 'close' function (if the rain sensor gets wet) and a high profile base. Comes with a 2yr manufacturer's warranty.

Weight: 12lbs (5.4kg)**650-01030****FANTASTIC VENT 4 1/4" WHITE GARNISH**

Suitable for use with 5000RBT, 6000RBT, 2250 and 3350.

Cut Out Dimensions: 345W x 345D (mm)

650-01064
LID ONLY FOR FANTASTIC VENT
"WHITE"



650-02012
FIAMMA ROOF HATCH 160

With an elegant and aerodynamic design, the Roof Hatch 160 is quiet, thanks to the new outside cover and rubber seal. Its watertight system guarantees rain streams down without the possibility of it coming in. Made with quality UV-resistant material, it also features an adjustable centre support arm. Can be installed on roofs with depths from 25-50mm. Supplied with a permanent airflow system and mosquito net.

Required cut-out dimensions: 390 x 390 (mm)



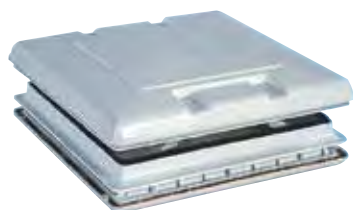
650-02018
FIAMMA TURBO VENT 160

Installs in 380mm - 400mm openings with 300mm 10 Blade 12V Fan with polar control thermostat.



650-02030
FIAMMA KOMBI 50CM X 50CM HATCH
WHITE

Opening on all four sides with convenient handles, the Kombi Hatch maintains constant RV ventilation. It is available with a roller blind which has a dark roller and a mosquito screen.

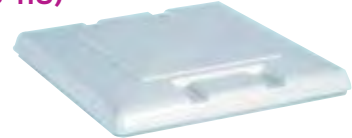


650-02031
FIAMMA KOMBI HATCH 50 X 50 VENT
CRYSTAL WITH ROLLER BLIND SYSTEM

Opening on all four sides with convenient handles, the Kombi Hatch maintains constant RV ventilation. Comes with a roller blind which has a dark roller and a mosquito screen.



650-02204
FIAMMA WHITE LID FOR VENT 50X50
(98683-118)



650-02350
FIAMMA VENT 50X50 LEFT ARM
(98683-054)



650-02352
FIAMMA VENT 50X50 RIGHT ARM
(98683-055)



650-02040
FIAMMA VENT 28

Ideal for airing small spaces, this rooflight does not have a fan. It is supplied with a permanent airflow system and a mosquito screen. Suitable for installation on roofs with a max thickness of 8.5cm.

Required cut out:
 28 x 28cm



650-02041**FIAMMA VENT 28 CRYSTAL**

Ideal for smaller spaces such as a bathroom or kitchen, the Vent 28 is made from impact and UV-resistant materials. It is supplied with a permanent airflow system and a mosquito screen to keep bugs out. It also features an aerodynamic shape which not only ensures a watertight system, but it also eliminates the need for a spoiler. For installation on roofs with a thickness ranging from 2.5 - 5.0 cm

**650-02042****FIAMMA TURBO 28**

The Turbo 28 provides fresh air for your RV's bathroom or kitchen. It comes with a fan (18cm in diameter), permanent airflow system and mosquito screen. Suitable for installation on roofs with a max thickness of 8.5cm. Required cut out: 28 x 28cm

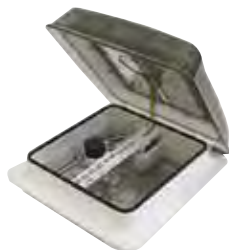
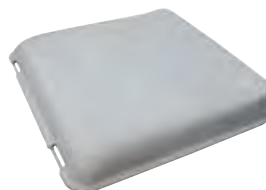
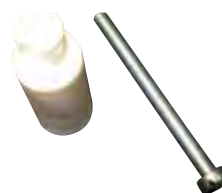
**650-02044****FIAMMA VENT 28 TURBO CRYSTAL
280MM X 280MM**

The Vent 28 Turbo is similar to the Vent 28 Crystal (above) except that it features an 18cm diameter fan, powered by 12V.

Weights: 2.4kg

Max Air Flow: 9m³/min

Permanent Air Flow: 50cm²

**FIAMMA HATCH SPARE PARTS****650-02200****STANDARD LID FOR FIAMMA
14" X 14" HATCH****650-02202****LID 160 FOR FIAMMA 14" X 14" HATCH****650-02208****FIAMMA WHITE LID ONLY T/S VENT 28****650-02210****HANDLE EXTENSION KIT FOR FIAMMA
STD. 14" X 14" HATCH****650-02214****WINDING ARM ONLY FOR FIAMMA
14" X 14" HATCH**

650-02216
WINDING HANDLE KIT ONLY FOR
FIAMMA TURBO VENT 1



650-02222
FIAMMA UNIVERSAL KNOB & EXTENSION
KIT

This universal extension kit allows Fiamma vents to be installed on thicker roofs with thicknesses from 3-8.5cm.



650-02314
FIAMMA ROLLO VENT 40

A roller blind system that is suitable for use on Fiamma 40cm x 40cm vents. It is fixed to the existing vent frame using the screws provided and still allows for permanent ventilation thanks to its side inlets.

Weight: 0.1kg



650-99000N
FIAMMA ROOF HATCH 14"X14"
(CRYSTAL LID)

Made from quality UV-resistant material, the Crystal Roof Hatch provides permanent airflow ventilation and has a mosquito screen to keep out the bugs. It has an aerodynamic design so a spoiler is not required for installation. The outer cover has an exclusive, patented rubber seal which guarantees a watertight system. It is interchangeable with older 40 x 40 cm Fiamma roof lights, as well as 36 x 36 (cm) - 42 x 42 (cm) roof lights thanks to the reinforced frame. To block out the sun, the Fiamma Rollo Vent 40 can be purchased.

Weights: 2.8kg

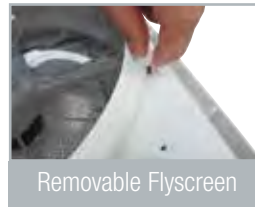


MAXXAIR VENTILATION SYSTEMS

RV ventilation has never been easier than with a MaxxFan. They've been used in the US RV market since 1988, and they are now exclusively available from Coast to Coast. The MaxxFan Plus and the MaxxFan Deluxe, both have a manual option and an electric opening option, and they also have a ceiling mounted control panel that is easy to use and read.

Some other features include:

- > Removable flyscreen - simply twist the L-clamps and remove for cleaning!
- > Installs onto all standard 14" x 14" (356mm x 356mm) roof openings
- > Powerful 10-speed fan motor
- > Fan can run even if the lid is closed (select 'Ceiling Fan Mode') and can be used in "intake" and "exhaust" modes
- > Provides over 900CFM, keeping your RV cool and comfortable
- > Twin lifting arms limit vibrations cause by wind when in the 'open' position



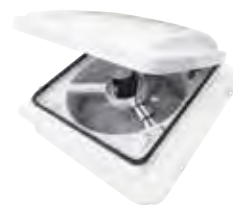
Removable Flyscreen



Twin Lifting Arms

650-03010
MAXXFAN PLUS WITH THERMOSTAT AND
MANUAL LIFT

Specifications	
Amp Draw on High	2.6A
Amp Draw on Low	0.17A
Dimensions (closed)	461L x 420W x 97H (mm)
Dimensions (open)	461L x 420W x 311H (mm)
Installed Weight	4.1kg
Roof Thickness	50mm (min) - 110mm (max)



650-03012 MAXXFAN PLUS WITH THERMOSTAT, POWER LIFT, RAIN SENSOR AND REMOTE

Specifications	
Amp Draw on High	2.6A
Amp Draw on Low	0.17A
Dimensions (closed)	461L x 420W x 97H (mm)
Dimensions (open)	461L x 420W x 311H (mm)
Installed Weight	4.1kg
Roof Thickness	50mm (min) - 110mm (max)



650-03014 MAXXFAN DELUXE WITH RAIN DOME, THERMOSTAT AND MANUAL LIFT

Specifications	
Amp Draw on High	2.5A
Amp Draw on Low	0.16A
Dimensions (closed)	589L x 421W x 128H (mm)
Dimensions (open)	589L x 421W x 230H (mm)
Installed Weight	5.4kg
Permanent Airflow	82cm ²
Roof Thickness	25mm (min) - 90mm (max)



650-03016 MAXXFAN DELUXE WITH RAIN DOME, THERMOSTAT, POWER LIFT AND REMOTE

Specifications	
Amp Draw on High	2.5A
Amp Draw on Low	0.16A
Dimensions (closed)	589L x 421W x 128H (mm)
Dimensions (open)	589L x 421W x 230H (mm)
Installed Weight	5.4kg
Roof Thickness	25mm (min) - 90mm (max)



650-04000 AERO FLO VENT COVER FOR 14" X 14" ROOF VENT

Get high flow fresh air ventilated throughout your RV in rain or sunshine. It has a swing open top for easy cleaning and because it has vents on three sides it has 30% more open vent area than some other vent covers. Made from UV stabilized resin it mounts easily to existing 14" x 14" roof vents.



650-04020 MAXXAIR STANDARD VENT COVER

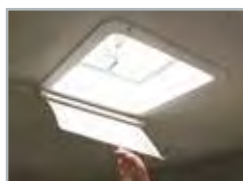
Translucent White



650-04030 CAMCO LIGHTS OUT RETRACTABLE RV ROOF VENT SHADE

Camco RV Cream Retractable Lights Out Vent Shade prevents light from shining into RV sleeping quarters at night. Easily mounts to ceiling and retracts into the space-efficient housing to allow light inside during the day. Opens to 14-1/8" x 19". Durable, lightweight vinyl's reflective finish reflects heat to keep RV cool.

- > Easy installation
- > Reflects heat to keep the RV cool
- > Opens to 14-1/8" x 19"
- > Prevent light from shining into RV at night
- > Easily retracts to let light in during the day



650-04100 MULLER WHITE PVC EXTERIOR VENT

Muller White PVC Exterior Vent



650-04110**ROTARY VENT PLASTIC WHITE**

Manufactured from high grade plastic (abs), exceptional on transportation vehicles such as buses, RV's, animal transport vehicles, delivery vans and marine vessels. Has a corrosion resistant stainless steel centre shaft.
Dimensions: 240D x 120H (mm)

**650-04150****SCUPPER VENT WHITE (SMALL)**

Powder coated aluminium in white with one spring.
Dimensions: 170L x 112W (mm)

**650-04155****SCUPPER VENT CUSTOM BLACK - SMALL**

Helps to pressurize the RV interior powder coated aluminium in black with a spring loaded door.

**650-04160****SCUPPER VENT INTERNAL FRAME PLASTIC**

Suitable for use with the small vent only (i.e. with 650-04150).

**650-04170****SCUPPER VENT WHITE (LARGE)**

Powder coated aluminium in white with two springs.
Dimensions: 242L x 149W x 20H (mm)

**650-04175****SCUPPER VENT INTERNAL FRAME FOR LGE VENT****650-04178****SCUPPER VENT REPAIR KIT FOR SMALL VENT****650-04179****SCUPPER VENT REPAIR KIT FOR LARGE VENT**