

# SECTION 6



## MAJOR APPLIANCES

(Product Group - 700)

Rangehoods	246
Washing Machines and Spare Parts	247 - 249
Fridge Fans	250
Waeco Refrigeration	250 - 254
Dometic Refrigeration and Accessories	254 - 257
Thetford Refrigeration	258 - 261
Thetford Cooking Appliances	261 - 266
Smev Cooking Appliances	266
Lido Stoves	267
Barbeques	267 - 268
Sphere Microwave	268
My Coolman Fridges	269 - 270
Sphere RVX Fridge Freezers	271 - 273

**ELECTROLUX RANGEHOODS****700-00100****CK150 RANGEHOOD 12V FLUSH MOUNT****700-00110****CK155 RANGEHOOD 12V SURFACE MOUNT****SPHERE™ RANGEHOODS (12V)**

Cooking in confined spaces can sometimes create unwanted scents and condensation on your RV's splashback. By installing a rangehood, hot and foul smells are quickly extracted up and out of your RV. Comprising of three models, the rangehoods are easy to install thanks to their compact size. This range features an LED lighting strip and easy to remove filters (for cleaning).

**700-06200****SPHERE™ TOUCH CONTROL**

Features a tempered glass front panel with an LCD display and a stainless steel body. Suitable for installation underneath a cupboard.

**Dimensions:** 530W x 304D x 60H (mm)

**Air Flow:** 100m<sup>3</sup>/hr

**Total Input:** 35W

**700-06202****SPHERE - S/STEEL RANGE HOOD WITH TOUCH CONTROL****Features**

- > Touch Control Stainless Steel Front
- > 3 Speed
- > 1 High Volume Airflow 12v Fan
- > LED Strip Light
- > Removable Easy to Clean Aluminium Filter
- > Stainless Steel Construction
- > Vents through the Rear or Top
- > Easy to Fit
- > W 528mm x D 300mm x H 60mm

**Specifications**

**Power:** 12 volt

**Rating Motor input Power:** Maximum 1 x16W

**Illumination:** Maximum 3W

**Total input Power:** 19W

**Air Flow:** 50m<sup>3</sup>/hr

**Removable Filter** 5 layer Aluminium mesh

**Out Side Dimension:** W 528mm x D 300mm x H 60mm

**Body Material:** Stainless Steel

**700-06212****SPHERE - RANGE HOOD WITH PUSH BUTTON PANEL****Features**

- > Stainless Steel Panel
- > 1 High Volume Airflow 12V Fan
- > LED strip light
- > Removable Easy to Clean Filter
- > Zinc Steel Construction
- > Vents through the Rear or Side
- > Easy to Fit

**Specifications**

**Power:** 12 volt DC

**Rating Motor input Power:** Maximum 1 x16W

**Illumination:** Maximum 3W

**Total input Power:** 19W

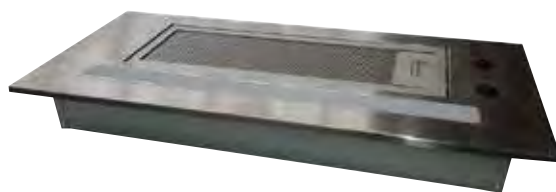
**Air Flow:** 50m<sup>3</sup>/hr

**Removable Filter** 5 layer Aluminium mesh

**Stainless Steel Panel Dimension:** W 520mm x D 230mm x H 9mm

**Out Side Dimension:** W 458mm x D 185mm x H 63mm

**Body Material:** Zinc Steel





Available in two compact sizes, these washing machines allow you to pack fewer clothes for an extended holiday. The need to wait your turn to use the caravan park laundry has ceased because you're now able to do your laundry when it is convenient for you. It has five processes from a wash-rinse-spin cycle (lasting approx. 38mins) to a simple spin cycle (lasting approx. 7 mins). Wash settings are set via the uncomplicated control panel. This washing machine is suited to cold wash only but has the adaptability of having the drainage hose outlet on either the left or the right side of the machine. With an elegant white body and stainless steel wash tub, it will fit the interior décor of any RV.

They now feature rubber hoses with s/s 'screw type' hose clamps and a newly designed carry basket with locking clips.

### 700-00352

#### AUTO MINI WASHING MACHINE (2.6KG)

Power Supply: 240V/50Hz

Max Water Volume: 20L

Weight: Gross - 18kg, Net - 16kg

Dimensions: 410W x 420D x 640H (mm)



### 700-00362

#### AUTO MINI WASHING MACHINE (3.3KG)

Power Supply: 240V/50Hz

Max Water Volume: 26L

Weight: Gross - 20kg, Net - 18.5kg

Dimensions: 410W x 420D x 740H (mm)

### 700-00800

#### SPHERE™ WASHING MACHINE TOP LID



**700-00803**  
SPHERE WASHING MACHINE WATER  
LEVEL SENSOR



**700-00816**  
SPHERE WASHING MACHINE WATER  
INLET HOSE



**700-00806**  
SPHERE WASHING MACHINE SPRING



**700-00817**  
SPHERE WASHING MACHINE PLASTIC  
BASKET FOR LINING



**700-00807**  
SPHERE WASHING MACHINE SAFETY  
SWITCH



**700-00818**  
SPHERE WASHING MACHINE UP DRAIN  
HOSE



**700-00810**  
SPHERE WASHING MACHINE LINT  
FILTER KIT



**700-00819**  
SPHERE WASHING MACHINE PUMP



**700-00812**  
SPHERE WASHING MACHINE V-BELT



**700-00822**  
SPHERE WASHING MACHINE CONNECT  
RUBBER HOSE



## SPHERE ECOSPIN PORTABLE WASHER

6



Sphere EcoSpin Portable Washer is a hand-powered spin cycle clothes washer. Gentle on clothes this Eco-friendly laundry option is the perfect choice for when you're off the beaten trail.

The Sphere EcoSpin Portable Washer can wash up to 2L of laundry in just minutes. This time and money saver requires no electricity and uses less water and detergent than traditional washing machines. Its clever design is gentle on clothes, there are no protruding elements to cause damage like other hand powered washers. It takes less effort to spin compared to other hand powered washers and the EcoSpin can even spin dry your clothes so they dry faster on the line.

The lightweight, highly portable Sphere EcoSpin portable washer is the perfect option for free camping, caravanning and fishing.

**700-00370**

### SPHERE ECOSPIN PORTABLE WASHER

#### Features

- > Easy to use
- > Compact and sturdy design
- > Tight locking lid
- > Fold down crank handle
- > Directional drainage hose
- > Four feet for excellent grip
- > 1 Year Warranty

#### Specifications

**Dimensions:** 345 x 344 x 343mm

**Load capacity:** 2L

**Wash time:** 2 minutes

**Spin time:** 30 seconds



SPHERE ECOSPIN PORTABLE WASHER



### 700-01050 FRIDGE FAN (SOLAR)



### 700-02010 WAECO DRAWER FRIDGE

Waeo CD30 Drawer Fridge 30L 12/24V (works in conjunction with 700-02402)

Current draw (startup): 5amp

Current draw (running): 3amp

Dimensions (mm): 560D x 440W x 250H

Including compressor: 730D x 440W x 250H



### 700-01060 FRIDGE FAN (12V)

Prevent heat build-up behind your RV fridge with this thermostatic controlled fridge fan. Too much heat around your fridge reduces its efficiency in keeping the fridge contents cold. It is quiet and helps to increase your fridges cooling ability by up to 40%. It can also assist in reducing your fridges energy consumption. Comes with 4m of wire and simple to follow fitting instructions.



### 700-01100 CAMCO REFRIDGERATOR VENT COVER TOP ONLY



### 700-01102 CAMCO REFRIDGERATOR VENT BASE



## WAECO ACCESSORIES

**700-02850****WAECO UFK MOUNTING BRACKET**

Suitable for: CF25, CF35, CF40, CF50, CF60, CCF35, CCF40, CCF45



## WAECO ADAPTERS

**700-02402****WAECO 110 - 240V AC TO 24V POWER ADAPTER (MPS-50A)**

Suits all Waeco CDF and CF models, has an output current of 6A.

Dimensions: 120W x 70H x 200D mm

**700-02414****WAECO EPS817A POWER ADAPTER**

A 240V to 12VDC adapter; suitable for use with: CF18, CF25Vera, CDF35Pack and CDF11; also suitable for use with all 12V thermoelectric coolboxes.

Dimensions: 115W x 65H x 170D (mm)



## WAECO COOLMATIC UPRIGHT FRIDGES

The new RPD-190 and 218 models in the WAECO CoolMatic RPD series include a number of enhancements such as increased capacity, automatic front flange heating via internal dew point coil, AC integration, bottom internal ventilation and improved performance at high ambient temperature.

**Features**

- > Comes standard with flush mount frame
- > Electronic control with turbo and economy modes
- > 4 safety shelves - 2 height adjustable, storage shelf in freezer
- > Hinge conversion kit supplied
- > 2 separate doors
- > Crisper drawers
- > Door storage bins (Now with 2 x full width in freezer)
- > Interior light
- > Moulded in drain trough for easy cleaning

**700-02696****WAECO COOLMATIC RPD190 UPRIGHT 190L 2 DOOR FRIDGE**

**Capacity:** Total approx. 190L

**Voltage:** 12/24 volts DC and 100-240 volts AC

**Insulation:** CFC-free polyurethane foam

**Overall Dimensions:** 633W x 1451H x 580D mm

**Cut out required:** 610-620W x 1422-1432H mm

**Weight:** Approx. 44kg



**700-02698****WAECO COOLMATIC  
RPD218 UPRIGHT  
218L 2 DOOR FRIDGE****Capacity:** Total approx. 218L**Voltage:** 12/24 volts DC and

100-240 volts AC

**Insulation:** CFC-free

polyurethane foam

**Overall Dimensions:**

633W x 1607H x 580D mm

**Cut out required:**

610-620W x 1580-1590H mm

**Weight:** Approx. 45kg**700-03000****RV ELECTRONICS FRIDGE SWITCH**

Has an inbuilt electronic movement & vibration sensor which switches the 12v circuit of the caravan's 3-way fridge "on" when the vehicle is moving & turns the fridge "off" when the vehicle stops.

Fridgeswitch has a varying timing circuit which may keep the fridge turned on for up to 3 minutes after the vehicle has stopped. This is to keep the fridge turned on while you are stopped at traffic lights.

- > No more flat batteries when the fridge is left on
- > Only one auxiliary line needed
- > Automatically turns your caravan fridge on and off
- > Easy 15 minute installation

**WAECO COOLMATIC CRX FRIDGE  
FREEZERS**

Equipped with energy efficient genuine WAECO compressors, the well-proven WAECO CoolMatic refrigerator series provide outstanding energy efficient refrigeration for built-in mobile applications. Their operation is reliable even in tilted positions and high ambient temperatures. They work economically, quietly and are ideal to run with solar panels.

The various models of the CoolMatic series satisfy all mobile fridge requirements. There's a matching refrigerator for every size of vehicle and for every room situation. With a modern stylish exterior, plus well organised and practical interior, the WAECO CoolMatic CRX range are the logical choice for your caravan, motorhome, yacht or boat.

**700-03102****WAECO COOLMATIC CRX 50****Storage volume (approx.):** 45L**Freezer compartment:** 4.4L**Voltage:** 12/24 V DC**Average Power Consumption:** approx. 40 W

**Current Consumption at 12V:** 1.1 Ah/h at +25°C ambient temperature, 1.7 Ah/h at +32°C ambient temperature, both at +5°C interior temperature

**Temperature Range:** approx. +12 to -15°C**Dimensions (W x H x D):** 380 x 534 x 447mm**Built-in Dimensions (W x H x D)****With Flush-mount Frame:** 406 x 536 x 495mm**With Standard frame:** 384 x 536 x 447mm**700-02980****WAECO CR-50 STANDARD MOUNTING  
FRAME****700-02990****WAECO CR-50 FLUSHMOUNT MOUNTING  
FRAME**



**700-03104****WAECO COOLMATIC CRX 65**

Storage volume (approx.): 57L

Freezer compartment: 7.0L

Voltage: 12/24 V DC

Average Power Consumption: approx. 45 W

Current Consumption at 12V: 1.4 Ah/h at +25°C ambient temperature, 1.8 Ah/h at +32°C ambient temperature, both at +5°C interior temperature

Temperature Range: approx. +12 to -15°C

Dimensions (W x H x D): 448 x 525 x 492mm

Built-in Dimensions (W x H x D)

With Flush-mount Frame: 474 x 527 x 540mm

With Standard frame: 452 x 527 x 492mm

Without door: 448 x 525 x 492 mm

Weight (approx.): 19.0 kg

**700-02982****WAECO CR-65 STANDARD MOUNTING FRAME****700-02992****WAECO CR-65 FLUSHMOUNT MOUNTING FRAME****700-03106****WAECO COOLMATIC CRX80**

Storage volume (approx.): 78L

Freezer compartment: 7.5L

Voltage: 12/24 V DC

Average Power Consumption: approx. 50 W

Current Consumption at 12V: 1.9 Ah/h at +25°C ambient temperature, 2.0 Ah/h at +32°C ambient temperature, both at +5°C interior temperature

Temperature Range: approx. +12 to -15°C

Dimensions (W x H x D): 475 x 640 x 475mm

Built-in Dimensions (W x H x D)

With Flush-mount Frame: 501 x 642 x 523mm

With Standard frame: 479 x 642 x 475mm

Weight (approx.): 21.0 kg

**700-02984****WAECO CR-80 STANDARD MOUNTING FRAME****700-02994****WAECO CR-80 FLUSHMOUNT MOUNTING FRAME****700-03108****WAECO COOLMATIC CRX110**

Storage volume (approx.): 104L

Freezer compartment: 9.0L

Voltage: 12/24 V DC

Average Power Consumption: approx. 65 W

Current Consumption at 12V: 1.8 Ah/h at +25°C ambient temperature, 2.4 Ah/h at +32°C ambient temperature, both at +5°C interior temperature

Temperature Range: approx. +12 to -15°C

Dimensions (W x H x D): 520 x 745 x 558mm

Built-in Dimensions (W x H x D)

With Flush-mount Frame: 546 x 747 x 606mm

With Standard Frame: 524 x 747 x 558mm

Weight (approx.): 26.0 kg

**700-02986****WAECO CR-110 STANDARD MOUNTING FRAME****700-02996****WAECO CR-110 FLUSHMOUNT MOUNTING FRAME**

**700-03110****WAECO COOLMATIC CRX140**

Storage volume (approx.): 130L

Freezer compartment: 11.0L

Voltage: 100/24 V AC 12/24 VDC

Average Power Consumption: approx. 65 W

Current Consumption at 12V: 1.89 Ah/h at +25°C ambient temperature, 2.5 Ah/h at +32°C ambient temperature, both at +5°C interior temperature

Temperature Range: approx. +12 to -15°C

Dimensions (W x H x D): 525 x 815 x 620mm

Built-in Dimensions (W x H x D)

With Flush-mount Frame: 551 x 817 x 668mm

With Standard frame: 529 x 817 x 620mm

Weight (approx.): 27.5 kg

**700-02988****WAECO CR-140 STANDARD MOUNTING FRAME****700-02998****WAECO CR-140 FLUSHMOUNT MOUNTING FRAME****700-03452****DOMETIC 8 SERIES ABSORPTION REFRIGERATOR RM8501RH 106L WITH RIGHT HINGE**

Made for built-in installations, the 8-Series features MES (Manual Energy Selection) which means you have the choice to operate it on 12V, 240V or gas. Available with a right-hinge, it has easy fingertip door opening. Other handy features include interior lighting, a magnetic seal on the door, a patented removable freezer compartment and flexible internal shelving. Comes with a Dometic 2yr warranty.

Dimensions: 523W x 821H x 529D (mm)

Weight: 28kg

Capacity: 106L (Total)

With Freezer: 100L Fridge, 9L Freezer

Power: 240V/ 135W; 12V/ 130W or Gas (18.3g/hr)

**700-03510****DOMETIC RM2350**

3-way 90L fridge 12V/240V/gas

Dimensions: H 766 x W 550 x D 565mm

**700-03530****DOMETIC RM2453**

3-way 120L fridge 12V/240V/gas

Dimensions: H 948 x W 632 x D 627mm

**700-03532****DOMETIC RM2553**

3-way 150L fridge 12V/240V/gas

Dimensions: H 1104 x W 632 x D 627mm



**700-03534****DOMETIC RM4601**

3-way 184L fridge 12V/240V/gas

Dimensions: H 1427 x W 632 x D 668mm

**700-03540****DOMETIC A1625 VENT KIT**

Vent kit with T piece for Domestic 3 way refrigerator, suitable for absorption fridges. These are fitted on the outside of the van behind the fridge to allow air flow.

**700-03544****DOMETIC LOCKING CLIP FOR A1625 VENT KIT****700-03536****DOMETIC RGE410**

2-way 220L fridge 240V/gas

Dimensions: H 1612 x W 592 x D 623mm

**700-03543****DOMETIC UPPER VENT T/S AS1625 WHITE****700-03538****DOMETIC RM4805 3-WAY FRIDGE/FREEZER**

A two door fridge/freezer featuring AES (Automatic Energy Selection). Has a metal flange for a built-in application.

Total Gross Volume: 224L

Freezer Volume: 47L

Dimensions: 1544H x 632W x 627D (mm)

Max Input 12V: 275W

**700-03548****DOMETIC LS300 VENT KIT (FRAME & GRILL) WHITE****700-03549****DOMETIC LS300 VENT KIT (FRAME & GRILL) BLACK**

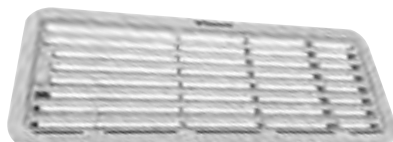
**700-03565**  
DOMETIC UPPER FRAME T/S AS1625  
WHITE



**700-03584**  
DOMETIC LOWER FRAME T/S AS1625  
BLACK



**700-03564**  
DOMETIC LOWER VENT T/S AS1625  
WHITE



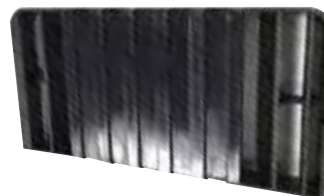
**700-03586**  
DOMETIC LOWER VENT T/S  
AS1625BLACK



**700-03563**  
DOMETIC LOWER FRAME T/S AS1625  
WHITE



**700-03588**  
DOMETIC UPPER VENT FLUE INSERT  
BLACK



**700-03567**  
DOMETIC UPPER VENT FLUE INSERT



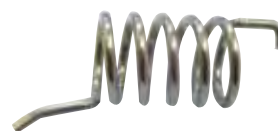
**700-03668**  
DOMETIC LOCK  
Domestic lock for RM4401.



**700-03580**  
DOMETIC UPPER FRAME T/S AS1625  
BLACK



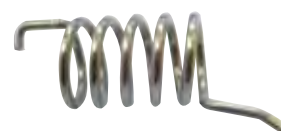
**700-03680**  
DOMETIC SPRING L/H T/S RM2330/2310

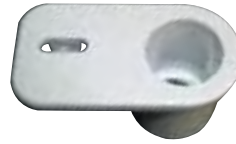


**700-03582**  
DOMETIC UPPER VENT T/S AS1625 VENT  
BLACK



**700-03691**  
DOMETIC SPRING R/H T/S RM2330/2310



**700-03684****DOMETIC FLUE KIT+T-PIECE. 3776****700-03662****DOMETIC SPRING HOUSING LH FOR RM2330/2310****700-03698****DOMETIC FRIDGE TEE PIECE****700-03650****DOMETIC ELEMENT 240V 195W FOR RM2453/RM2553****700-03652****DOMETIC ELEMENT 240V 175W FOR RM2330/RM2350****700-03656****DOMETIC ELEMENT 240V 135W FOR RM4401/4400****700-03660****DOMETIC SPRING HOUSING RH FOR RM2330/2310**



## THETFORD 3-WAY FRIDGES AND VENTS

For more than 40 years, Thetford has been designing and developing refrigerators for the leisure market. Thetford absorption refrigerators work differently than your fridge at home. Thetford 3-way refrigerators have no compressor, making them much quieter. This means you can relax and enjoy a pleasant stay in your caravan or camper, without noisy appliances buzzing in the background. Not stopping with mere production, Thetford continues to develop and innovate in terms of quality, design and ease of use. Thetford refrigerators are extensively tested to high quality standards, are AGA approved and carry the CE mark. Plus Thetford refrigerators come with a full three year warranty.

### 700-03883

#### 90L 3-WAY REFRIGERATOR (N314-E)

- > Compact model (90L gross capacity)
- > Electric display
- > Automatic Energy Selection (SES)
- > AGA (The Australian Gas Association) approved to the latest Australian standards
- > Adjustable thermostat to respond to high ambient temperatures and varied use
- > Flame current meter monitors gas ignition
- > Easy-to-clean, durable white, powder-coated shelves
- > Includes one ice tray
- > Contemporary design with ergonomic controls and latch.

#### Specifications

**Dimensions Including Depth of Door:** 770H x 556W x 582D (mm)

**Enclosure Cut-Out Dimensions:** 756H x 521W x 543D (mm)

**Total Gross Capacity:** 90L (approx.)

**Freezer Compartment:** 11L (approx.)

**Energy Consumption on 12V/240V:** 2.7kW/24hr (approx.)

**Energy Consumption on Gas:** 12g/hr (approx.)

**Net Weight:** 28kg

**Cooling Fan:** n/a



### 700-03812

#### 136L 3-WAY REFRIGERATOR (N414-E)

- > Compact model (136L gross capacity)
- > Electric display
- > Automatic Energy Selection (SES)
- > AGA (The Australian Gas Association) approved to the latest Australian standards
- > Adjustable thermostat to respond to high ambient temperatures and varied use
- > Flame current meter monitors gas ignition
- > Easy-to-clean, durable white, powder-coated shelves
- > Includes one ice tray
- > Contemporary design with ergonomic controls and latch.

#### Specifications

**Dimensions Including Depth of Door:** 937H x 625W x 640D (mm)

**Enclosure Cut-Out Dimensions:** 929H x 602W x 610D (mm)

**Total Gross Capacity:** 136L (approx.)

**Freezer Compartment:** 20L (approx.)

**Energy Consumption on 12V/240V:** 3.5kW/24hr (approx.)

**Energy Consumption on Gas:** 17g/hr (approx.)

**Net Weight:** 37kg

**Cooling Fan:** 1



### 700-03772

#### THETFORD N3141A 140LT SES 3 WAY FRIDGE REVERSIBLE HAND

Thetford Australia proudly introduces a new fridge for the RV market, the N3141-A. The new N3141-A is the ultimate space saver which also offers the best cooling performance. The state-of-the-art LCD display with touch screen and the unique external drawer make the fridge super easy to use.

#### Specifications

**Dimensions Including Depth of Door:**

1510H x 439W x 561D (mm)

**Total Volume incl. freezer:** 141L

**Freezer Compartment:** 15L

**Usable Power Source:** DC/AC/Gas

**Control Panel:** LCD

**Door Shape:**

Flat Framed

**Refrigerant**

**Technology:**

**Net Weight:** 38kg



## 700-03920

### THETFORD 166L SES 3 WAY ELECTRONIC ABSORPTION FRIDGE (N514-E)

- > Larger model (166L gross capacity)
- > Electric display
- > Automatic Energy Selection (SES)
- > AGA (The Australian Gas Association) approved to the latest Australian standards
- > Adjustable thermostat to respond to high ambient temperatures and varied use
- > Flame current meter monitors gas ignition
- > Easy-to-clean, durable white, powder-coated shelves
- > Includes one ice tray
- > Contemporary design with ergonomic controls and latch.

#### Specifications

##### Dimensions Including Depth of Door:

1090H x 625W x 640D (mm)

##### Enclosure Cut-Out Dimensions:

1083H x 602W x 610D (mm)

**Total Gross Capacity:** 166L (approx.)

**Without Freezer Compartment:** 144L (approx.)

**Freezer Compartment:** 20L (approx.)

**Usable Power Source:** DC/AC/Gas

**Energy Consumption 12v/240v:** 3.5kWh/24h

**Energy Consumption Gas:** 17gr/h

**Door Shape:** Flat / Framed

**Net Weight:** 40kg

**Cooling Fans:** 1



## THETFORD 185L SLIMLINE N3185 FRIDGES

This two door 3 Way Fridge/Freezer combination is the perfect space saver when you are looking for a high quality Fridge with a big capacity. Thetford N3000 Fridges: small in size, BIG in volume!

#### Specifications

##### Dimensions Including Depth of Door:

1250H x 525W x 628D (mm)

##### Enclosure Cut-Out Dimensions:

1245H x 531W x 585D (mm)

**Total Gross Capacity:** 185L (approx.)

**Without Freezer Compartment:** 154L (approx.)

**Freezer Compartment:** 31L (approx.)

**Usable Power Source:** DC/AC/Gas

**Door Shape:** Curved / Framed

**Net Weight:** 43kg

**Cooling Fans:** 2

## 700-03880

### THETFORD LH 185L SLIMLINE N3185 FRIDGE

## 700-03881

### THETFORD RH 185L SLIMLINE N3185 FRIDGE



# 6

THETFORD FRIDGES

## THETFORD 192L 3 WAY ABSORPTION FRIDGES

- > Electric operation
- > Automatic Energy Source Selection
- > With two fans to boost cooling performance
- > AGA (The Australian Gas Association) approved to the latest Australian standards
- > Adjustable thermostat to respond to high ambient temperatures and varied use
- > Flame current meter monitors gas ignition
- > Easy-to-clean, durable white, powder-coated shelves
- > Includes one ice tray
- > Contemporary design with ergonomic controls and latch.

### Specifications

**Dimensions Including Depth of Door:**

1454H x 624W x 645D (mm)

**Enclosure Cut-Out Dimensions:**

1415H x 607W x 620D (mm)

**Total Gross Capacity:** 192L (approx.)

**Without Freezer Compartment:** 137L (approx.)

**Freezer Compartment:** 47L (approx.)

**Usable Power Source:** DC/AC/Gas

**Energy Consumption 12v/240v:** 4.3kWh/24h

**Energy Consumption Gas:** 19gr/h

**Door Shape:** Flat / Framed

**Net Weight:** 52kg

**Cooling Fans:** 1

### 700-03887

**THETFORD RH 192L 3 WAY ABSORPTION FRIDGE N614E**

### 700-03888

**THETFORD LH 192L 3 WAY ABSORPTION FRIDGE N614E**



### 700-03722

**THETFORD FLUE KIT**

To suit N304, N504 and N604



### 700-03730

**THETFORD TOP OUTSIDE VENT FOR 3-WAY FRIDGES (WHITE)**

#### Specifications

**Main Dimensions:** 186H x 483W (mm)

**Cut Out Dimensions:** 156 x 451W (mm)

**Net Weight:** 0.5kg



### 700-03732

**THETFORD BOTTOM OUTSIDE VENT FOR 3-WAY FRIDGES (WHITE)**

#### Specifications

**Main Dimensions:** 186H x 483W (mm)

**Cut Out Dimensions:** 156 x 451W (mm)

**Net Weight:** 0.5kg



### 700-03736

**THETFORD TOP OUTSIDE VENT FOR 3-WAY FRIDGES (BLACK)**

#### Specifications

**Main Dimensions:** 186H x 483W (mm)

**Cut Out Dimensions:** 156 x 451W (mm)

**Net Weight:** 0.5kg



### 700-03738

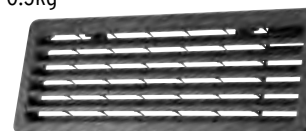
**THETFORD BOTTOM OUTSIDE VENT FOR 3-WAY FRIDGES (BLACK)**

#### Specifications

**Main Dimensions:** 186H x 483W (mm)

**Cut Out Dimensions:** 156 x 451W (mm)

**Net Weight:** 0.5kg



**700-03837**

**THETFORD LARGE FRIDGE VENT WHITE**

**Specifications**

Main Dimensions: 281H x 533W (mm)

Cut Out Dimensions: 248 x 488W (mm)

Net Weight: 0.7kg



**700-03740**

**THETFORD LARGE FRIDGE VENT BLACK**

**Specifications**

Main Dimensions: 281H x 533W (mm)

Cut Out Dimensions: 248 x 488W (mm)

Net Weight: 0.7kg



**THETFORD COOKING APPLIANCES**

Who says you can't enjoy culinary cooking in your camper, caravan or holiday home? With the well-designed hobs, ovens, grills and sinks from Thetford, you can! Thetford cooking appliances are designed to be as home like as possible. Thetford uses the highest quality materials and thoroughly test each appliance to ensure its ultimate safety - and your satisfaction. All Thetford cooking appliances are designed and manufactured in the British city of Sheffield, and they come with a three year manufacturer's warranty.

**700-04000**

**CAPRICE MK3 - DUAL FUEL**

An all-in-one combination unit (with stove, grill and oven) which offers you all the convenience to make the best meals, just like home! It features a flame failure device on valves, automatic shut off on glass lid, glass lid, oven light, oven shelf, multifunction pan, detachable handle and pan trivet.

**Specifications**

Overall Dimensions:

644H x 513W x 500D (mm)

Enclosure Cut-Out Dimensions:

646H x 496W x 493D (mm)

Gas Hotplate Burners:

2 x 1.5kW; 1 x 1.0kW

Electric Hotplate (220-240V, ~50Hz):

1000W

Oven Capacity: 36L

Grill Capacity: 13.7L

Net Weight: 26.2kg



**700-04010**

**CAPRICE MK3 - GAS ONLY**

An all-in-one combination unit (with stove, grill and oven) which offers you all the convenience to make the best meals, just like home! It features a flame failure device on valves, automatic shut off on glass lid, glass lid, oven light, oven shelf, multifunction pan, detachable handle and pan trivet.

**Specifications**

Overall Dimensions:

644H x 513W x 500D (mm)

Enclosure Cut-Out Dimensions:

646H x 496W x 493D (mm)

Gas Hotplate Burners:

3 x 1.5kW; 1 x 1.0kW

Oven Capacity: 36L

Grill Capacity: 13.7L

Net Weight: 25.2kg



**NZ #700-90034**

6

THETFORD COOKING APPLIANCES



**700-04020****MINIGRILL MK3 - DUAL FUEL**

If space is limited, this grill and hob combination offers you all the quality features: flame failure device on valves, automatic shut off on glass lid, glass lid, multifunctional pan, detachable handle and pan trivet.

**Specifications****Overall Dimensions:**

311H x 513W x 500D (mm)

**Enclosure Cut-Out Dimensions:**

312H x 496W x 493D (mm)

**Gas Hotplate Burners:**

2 x 1.5kW; 1 x 1.0kW

**Electric Hotplate (220-240V, ~50Hz):** 1000W

**Grill Capacity:** 13.7L

**Net Weight:** 16.2kg

**700-04058****TRIPLEX - GAS ONLY**

A compact combination stove, grill and oven that affords multi-function versatility in a durable, light-weight and easy to clean unit. Its main features include: flame failure device on valves, automatic shut off on glass, glass lid, oven shelf, multifunctional pan, detachable handle and pan trivet.

**Specifications****Overall Dimensions:**

468H x 456W x 500D (mm)

**Enclosure Cut-Out Dimensions:**

463H x 445W x 493D (mm)

**Gas Hotplate Burners:**

2 x 1.5kW; 1 x 2.5kW

**Oven Capacity:** 36L

**Net Weight:** 25.5kg



**NZ #700-90036**

**700-04030****MINIGRILL MK3 - GAS ONLY**

If space is limited, this grill and hob combinations offer you all the quality features: flame failure device on valves, automatic shut off on glass lid, glass lid, multifunctional pan, detachable handle and pan trivet.

**Specifications****Overall Dimensions:**

311H x 513W x 500D (mm)

**Enclosure Cut-Out Dimensions:**

312H x 496W x 493D (mm)

**Gas Hotplate Burners:**

3 x 1.5kW; 1 x 1.0kW

**Grill Capacity:** 13.7L

**Net Weight:** 14.5kg



**NZ #700-90040**

**700-04070****OVEN AND GRILL MK3 - DUPLEX**

Enhance your kitchen with a Thetford combination oven and grill. They are made of high quality materials and components that are easy to use. Features include: piezo ignition, flame failure device on valves, oven shelf, multifunctional pan, detachable handle and pan trivet.

**Specifications****Overall Dimensions:**

445H x 456W x 440D (mm)

**Enclosure Cut-Out Dimensions:**

438H x 445W x 490D (mm)

**Oven Capacity:** 36L

**Net Weight:** 13.5kg



**NZ #700-90038**

**700-04040****TRIPLEX MK3 - DUAL FUEL**

A compact combination stove, grill and oven that affords multi-function versatility in a durable, light-weight and easy to clean unit. Its main features include: flame failure device on valves, automatic shut off on glass, glass lid, oven shelf, multifunctional pan, detachable handle and pan trivet.

**Specifications****Overall Dimensions:**

468H x 456W x 500D (mm)

**Enclosure Cut-Out Dimensions:**

463H x 445W x 493D (mm)

**Gas Hotplate Burners:** 2 x 1.5kW

**Electric Hotplate (220-240V, ~50Hz):** 1000W

**Oven Capacity:** 36L

**Net Weight:** 23.1kg

**700-04080****THETFORD SPINFLO MK3 GRILL ONLY**

Explore your cooking creativity with the Thetford-MK3 Grill (Gas). Features include a flame failure device on valves, oven shelf, multi-function pan with detachable handle, pan trivet and piezo ignition.

**Specifications****Dimensions:**

282H x 444W x 450D mm

**Recess Required:**

277H x 445W x 490D mm

**Total Heat Input - Grill:**

1.6 kW

**Weight:** 6.2kg





**700-04100****ARGENT HOB MK3 - 3 BURNER**

The Argent Hob is a stainless steel hob with detachable pan stands, that are easy to clean and enamelled burner lids. Features include: flame failure device on valves, smoked black glass lid and automatic shut off on lid.

**Specifications****Overall Dimensions:**

110H x 570W x 470D (mm)

**Worktop Cut-Out Dimensions:**

545W x 433D (mm)

**Gas Hotplate Burners:**

2 x 1.5kW; 1 x 2.5kW

**Net Weight:** 8.0kg

**700-04210****TOPLINE HOB**

A sleek, flush-mounting hob with a glass lid that covers burners for a clean look. It has an electric 12V DC ignition, a steel coated trim and frame. It also features: a flame failure device on valves, smoked black glass lid, flush bench top fitment and an automatic shut off on lid.

**Specifications****Overall Dimensions:**

105H x 546W x 482D (mm)

**Worktop Cut-Out Dimensions:**

538W x 473D (mm)

**Gas Hotplate Burners:**

2 x 1.5kW; 1 x 2.5kW

**Net Weight:** 10.7kg

**700-04110****ARGENT HOB MK3 - 4 BURNER**

The Argent Hob is a stainless steel hob with detachable pan stands, that are easy to clean and enamelled burner lids. Features include: flame failure device on valves, smoked black glass lid and automatic shut off on lid.

**Specifications****Overall Dimensions:**

110H x 570W x 470D (mm)

**Worktop Cut-Out Dimensions:**

545W x 433D (mm)

**Gas Hotplate Burners:**

4 x 1.5kW

**Net Weight:** 8.0kg

**700-04551****HOTPLATE, 2 BURNER AND GRILL**

A fully self-enclosed, stand alone and portable gas stove, made out of high quality stainless steel. It features: a flame failure device on valves, a multifunction pan, a pan trivet, a detachable pan handle and a stainless steel lid.

**Specifications****Overall Dimensions:**

160H x 445W x 345D (mm)

**Gas Hotplate Burners:** 2 x 1.5kW

**Grill Burner:** 1.5kW

**Net Weight:** 7.0kg

**700-04120****THETFORD CAPRICE FAN FORCED OVEN**

An all-in-one combination unit (with stove, grill and oven) which offers you all the convenience to make the best meals, just like home! This fan-forced oven circulates heat around the cooking area to ensure food is cooked evenly. Key Features include an optimal temperature distribution, automatic shut off if the glass lid is closed and a stylish design built with high quality components. Made in Great Britain, the Thetford Caprice fan-forced oven comes with a 3 year warranty.

**Specifications**

**Ignition:** 12V spark

**Stovetop:** 3 gas burners and one electric hotplate

**Overall Dimensions:**

644H x 513W x 500D (mm)

**Cut Out Dimensions:**

646H x 496W x 493D (mm)

**Gas Hotplate Burners:**

2 x 1.5kW, 1 x 1kW

**Electric Hotplate:** 1000W

**Oven Capacity:** 36L

**Net Weight:** 26.5kg

**700-90010N****NELSON MARINE COOKER**

Suitable for the marine environment, the Marine Cooker features two gas burners, an open grill and oven. It is finished stylishly in stainless steel with a glass door.

**Weight:** 19.1kg

**Dimensions:** 525H x 450W x 420D (mm)



### 700-90028N THETFORD BASIC LINE 340 HOB

A stainless steel hob that has an electric (12V) spark ignition. The pan stands are easy to remove enabling easy cleaning. Features include: domestic style black knobs (40mm in diameter), 2 gas burners (1.5kW each) and 1 rapid burner (2.5kW).

It has a flame failure device installed, along with a glass lid to maximise space when not being used.

**Dimensions:** 100H x 540W x 445D (mm)

**Cut Out Required:** 527W x 429D (mm)

**Weight:** 5.6kg



### SPINFLO

### 700-90016N

A triangular stainless steel hob featuring a 12V spark ignition. It has detachable pan stands and the three burners have enamelled burner lids. Quality is uncompromised as this hob not only has easy to use domestic style knobs but the three burners are semi-rapid (1.5kW). A glass lid is attached to optimise bench top space. A left hand and right hand version is available (in reference to what side the glass lid is hinged.)

#### Specifications:

**External Dimensions:** 100H x 480W x 480D (mm)

**Bench Top Cut Out:** 453W x 460D (mm)

**Total Heat Input:** 4.5kW

**Maximum Pan Sizes:** x2 200mm, x1 180mm

**Gas Inlet Type:** Short, rear

**Weight:** 4.1kg

### 700-90030N

### THETFORD TRIPLEX CARBON (WITH SEAL)

This combination stove, grill and oven, provides multi-function versatility in a durable, lightweight and easy-to-clean unit. It also features a stainless steel interior and is backed by a three year manufacturer's warranty.

#### Specifications:

#### External Dimensions:

468H x 456W x 500D (mm)

**Oven Capacity:** 36Lt

**Oven Burner:** 1.6Kw

**Stove Burners:**

x2 1.8Kw, x1 2.4Kw

**Weight:** 21.5Kg



### 700-90008N

### SPINFLO 2 BURNER GRILL S/STEEL

The Thetford Spinflo two burner hotplate comes supplied with pan supports and a grill pan, with each burner featuring individual controls and safeguarding flame failure devices.

#### Specifications:

**Weight:** 6.5 kg

**Dimensions:** 445W x 345D x 160H (mm)



**700-90038****SPINFLO DUPLEX GRILL & OVEN NEW LOOK MIRROR - DUPLEX**

Enhance your kitchen with a Thetford combination oven and grill. They are made of high quality materials and components that are easy to use. Features include: piezo ignition, flame failure device on valves, oven shelf, multifunctional pan, detachable handle and pan trivet.

**Specifications:**

**Overall Dimensions:** 445H x 456W x 440D (mm)

**Enclosure Cut-Out Dimensions:** 438H x 445W x 490D (mm)

**Gas Hotplate Burners:** 2 x 1.5kW; 1 x 2.5kW

**Oven Capacity:** 36Lt

**Net Weight:** 13.5kg

**700-90022N****THETFORD MK3 CARBON (WITH SEAL AND LIGHT)**

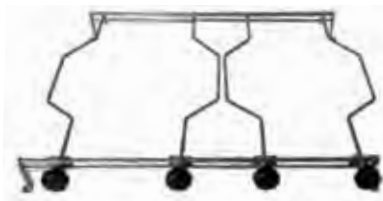
Featuring a 12V spark ignition system, the MK3 Carbon caters to your every cooking desire. It has four gas burners, a grill, a 36L oven and an internal oven light.

**Weight:** 25.5kg

**Dimensions:** 644H x 513W x 500D (mm)

**700-91000N****THETFORD SEA RAIL**

Suited to the Nelson Marine Cooker. Sea rail and pot holders effectively limit your pot's movement whilst cooking.

**700-91002N****THETFORD GIMBLE**

A stainless steel gimble set best suited to the Nelson Marine Cooker. It firmly attaches the cooker in position to ensure a constant level cooking surface even if your boat heels over.

**700-04014****THETFORD GLASS LID T/S CAPRICE/MINIGRILL MK3**

Replacement glass lid only to suit Thetford Caprice and Minigrill MK3.

**700-04052****THETFORD GLASS LID T/S TRIPLEX MK3**

Replacement glass lid only to suit Thetford Triplex MK3.

**700-04600****GRILLBOX MK3**

This grillbox suits the 8 Series hobs and is made of aluminium, which makes it easy to clean, lightweight and simple to use.

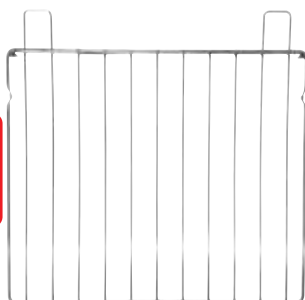
**Specifications**

**Overall Dimensions:** 150H x 475W x 350D (mm)

**Enclosure Cut-Out Dimensions:** 150W x 475W x 350D (mm)

**Net Weight:** 2.0kg

**700-04610****THETFORD PIEZO IGNITOR FOR SPINFLO**

**700-04612****THETFORD GRILL+HOB KNOBS T/S ALL SPINFLO UNITS****700-04614****THETFORD SPINFLO 12V IGNITION SWITCH****700-04616****THETFORD CONTROL KNOB FOR SPINFLO MK3 OVEN ONLY****700-04012****THETFORD OVEN RACK T/S CAPRICE MK3****700-05160****SMEV 2 BURNER S/S DROP IN COOK TOP WITH GLASS LID**

This cook top features drop in installation, compact design with a modern appearance

Dimensions: W480mm x D370mm x H90mm

**700-05168****SMEV 3 BURNER STOVE & SINK COMBO NO MIXER**

This space saving combination features modern design, space saving and a glass lid. All burners have flame failure safety device.

Dimensions: W970mm x D430mm x H150mm

**700-05170****SMEV 3 BURNER STAINLESS STEEL DROP IN COOK TOP WITH GLASS LID**

This cook top features drop in installation and a compact design with a modern appearance.

Dimensions: W560mm x D440mm x H90mm





**700-05502****NEW LIDO JUNIOR**

A sturdy and compact cooker with grill and brass burners. The body is stainless steel with a painted base and a hinged lid. Burners on the new Lido Junior have now been fitted with a flame failure device, making it suitable for use inside caravans, motorhomes etc. Requires a 5/16" SAE male gas connection.

**Weight:** 3.6kg**Dimensions:** H175 x W480 x D290mm**700-05550****HOSE 900MM T/S LIDO JUNIOR****700-05640****DELUXE 2.0 STAINLESS STEEL BARBEQUE WITH HIGH LID**

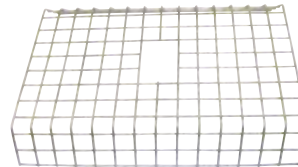
The latest addition to the Sizzler range now features a non-stick aluminium griller plate. As per the other Sizzlers, it too is totally windproof (being that the burners are sheltered in the cavity under the griller plate). Comes with a 1yr manufacturer's warranty.

**Closed Dimensions:** 350D x 530W x 255H (mm) (including handle)**Plate Size:** 430W x 250D (mm)**Burners:** Two (stainless steel with piezo ignition)**Weight:** 11.0kg**AGA Approval:** Yes (5884)**700-05700****SIZZLER BARBEQUE GAS HOSE WITH BAYONET FITTING**

Suitable for use in RVs with a permanent gas flow system.

**700-05702****SIZZLER BARBEQUE STANDARD GAS HOSE AND REGULATOR KIT**

Suitable for use when running a Sizzler Barbeque off a gas bottle.

**700-05720****SIZZLER BARBEQUE COOKING RACK TO SUIT ALL SIZZLER BARBEQUES****Dimensions:** 350W x 280L x 50H (mm)**700-05730****SIZZLER BARBEQUE UTENSIL TRAY SUITABLE FOR USE ON ALL SIZZLER BARBEQUES**

The utensil tray clips onto the front of the barbeque to hold your sauces or tongs.





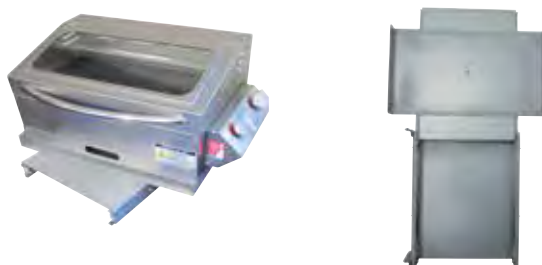
**700-05752****SIZZLER BARBEQUE SLIDE KIT WITH QUICK RELEASE BRACKET**

Suitable for use with the Sizzler Deluxe 2.0, the Slide Kit allows for installation (and storage) inside a cavity in your RV. By flicking the Quick Release Bracket, your barbeque can easily be dismounted for use in a different location.

**700-05754****SIZZLER BARBEQUE SWIVEL SLIDE KIT**

Similar to slide kit above, the Swivel Kit allows for installations into a narrower cavity. To use the barbeque, simply rotate 90°.

*Note: BBQ not included*

**700-06052****SPHERE™ MIRRORED MICROWAVE OVEN (25L)**

Add convenience to your RV with the Sphere™ microwave oven, which now features a mesmerising mirror finish. With a large 25L oven capacity and five power level settings, it allows you to prepare a meal in no time! A digital control panel allows you to view and set your usage requirements, as well as display the ever handy clock. Defrosting frozen foods have been made easy as you're able to select whether you want to use speed or weight as the defrosting basis. It also features one-touch express cooking, a glass turntable (which is dishwasher safe), an end signal and a child safety lock. Aesthetically pleasing, the interior is a crisp white.

*Note: When installing a microwave, it must be placed on a flat and stable surface able to hold the weight of the microwave. You should always cover your food whilst cooking as it prevents spattering and also helps to cook the food evenly.*

**Output Power:** 900W

**Door Open:** Push button

**Net Weight:** 13.9kg

**Dimensions:** 281H x 490W x 396D (mm)

**Voltage:** 230 - 240V

**Frequency:** 50Hz

**700-06154****MICROWAVE OVEN GLASS TURNTABLE**

T/S Microwave Oven 25L 900W

**700-06150****MICROWAVE OVEN CONNECTOR T/S MICROWAVE OVEN 25L 900W**



myCOOLMAN® fridges are equipped to come where the road takes you. Keep your food fresher longer with cutting-edge cooling tech and rule your campsite with our genius quality-of-life features. Only you decide when it's time to head out, or pack up.

Powerful, robust and ready for any adventure, myCOOLMAN® fridges and freezers bring freshness to the Australian bush. Designed and engineered in Germany to suit the demanding Australian conditions, myCOOLMAN® offers versatility with a range of practical features and sophisticated technology for everyone who loves life off the beaten track. Ranging in sizes from 36 to 105 litres with single and dual zone models, cooling and freezing food of all kinds is a breeze with reliability down to minus 18 degrees.

Packaged in a sturdy transport bag, chilled goods are protected even if no power is available at short notice. Access to the contents is easy thanks to Velcro fasteners. Even when packaged, full operation of the cooler is guaranteed via visible display control and app. The bags are of course available for all box sizes. The pockets on it are very practical for cutlery, tools and the other little things that are helpful in the outback.

### FEATURES

- **Technology** - Digital display & USB port and charger with 3000mAh Multi-voltage system AC (240V) and DC (12/24V) with battery protection DC inlet on two ends.
- **Multi-functional lid** - Two way opening lid (not CCP36/44) & headroom for upright standing bottles.
- **Compressor power** - Powered by 12/24 Volt DC compressor helping you keep items cooler for longer.
- **LED Lighting** - LED interior light to help see items in your fridge at any time of day or night.
- **Dual Storage** - Divided storage options with removable sections & fully refrigerated multi-level compartment.

### 700-20000

#### MY COOLMAN 36L PORTABLE FRIDGE & FREEZER - 12/24V & 240V

CCP 36 Single Zone \*

Dimensions(mm): L652 W412 H428

Weight(kg): 18

Volume(L): 36

Current: 12V-3.40A / 24V-1.70A / 240V-0.44A

Refrigerant / Quantity R134a / 43g



**700-20002****MY COOLMAN 44L PORTABLE FRIDGE & FREEZER - 12/24V & 240V**

CCP 44 Single Zone \*

Dimensions(mm): L652 W412 H488

Weight(kg): 20.5

Volume(L): 44

Current: 12V-3.80A / 24V-1.90A / 240V-0.30A

Refrigerant / Quantity R134a / 45g

**700-20008****MY COOLMAN 69L PORTABLE FRIDGE & FREEZER (DUAL ZONE) - 12/24V & 240V**

CCP 69 Single Zone \*

Dimensions(mm): L732 W456 H555

Weight(kg): 27.2

Volume(L): 69 (24/45)

Current: 12V-5.30A / 24V-2.80A / 240V-0.31A

Refrigerant / Quantity R134a / 75g

**700-20004****MY COOLMAN 60L PORTABLE FRIDGE & FREEZER - 12/24V & 240V**

CCP 60 Single Zone \*

Dimensions(mm): L732 W456 H488

Weight(kg): 23.5

Volume(L): 60

Current: 12V-5.60A / 24V-2.90A / 240V-0.30A

Refrigerant / Quantity R134a / 65g

**700-20010****MY COOLMAN 96L PORTABLE FRIDGE & FREEZER (DUAL ZONE) - 12/24V & 240V**

CCP 96 Single Zone \*

Dimensions(mm): L912 W536 H500

Weight(kg): 31.8

Volume(L): 96 (41/55)

Current: 12V-5.80A / 24V-2.90A / 240V-0.34A

Refrigerant / Quantity R134a / 96g

**700-20006****MY COOLMAN 73L PORTABLE FRIDGE & FREEZER - 12/24V & 240V**

CCP 73 Single Zone \*

Dimensions(mm): L732 W456 H555

Weight(kg): 25

Volume(L): 73

Current: 12V-5.90A / 24V-3.00A / 240V-0.30A

Refrigerant / Quantity R134a / 70g

**700-20012****MY COOLMAN 105L PORTABLE FRIDGE & FREEZER - 12/24V & 240V**

CCP 105 Single Zone \*

Dimensions(mm): L912 W536 H500

Weight(kg): 28.6

Volume(L): 105

Current: 12V-5.50A / 24V-2.80A / 240V-0.32A

Refrigerant / Quantity R134a / 100g







The new range of portable fridges that take comfort to a new level.

Sphere RVX fridge/freezers are available in six models to suit most needs and budgets. They are the perfect way to take a little bit of the comfort and convenience of home with you on all your camping and RV adventures.

Offered in two distinct styles, the skillfully designed End or Side Opening lid can be lifted from either side or removed completely in one simple motion.

### Benefits

- > The RVX range features an LED display and push button controls so you can easily and accurately adjust and monitor your fridges temperature.
- > The robust and refined cabinet utilizes a polypropylene construction with reinforced corners making it strong and easy to keep clean.
- > The fully insulated cabinet and lid will keep your food and drinks cold and fresh during the hottest Australian summers.
- > Fold away carry handles make storing and lifting the fridge a breeze while offering a convenient point to secure the fridge while traveling.
- > An internal LED light that switches on when the lid is open ensures you will always be able to see what you're looking for.
- > A removable internal basket and separate dairy compartment allows you to organise your fridge how you like and easily clean and maintain it.
- > The entire RVX range comes with a protective cover as standard to help you protect your investment.
- > 3 Year Warranty plus Additional 2 Year Parts Only Compressor Warranty.

### 700-22080

#### SPHERE RVX-35 FRIDGE/FREEZER

**Capacity:** 35L

**Dimensions (mm):** 677L x 410W x 439H

**Weight:** 18.7kg

**Lid Opening:** End

**Voltage:** Operates on both DC 12V/24V and AC 240V

**Temperature Range:** -22°C ~ 10°C

**Compressor:** SECOP compressor

**Materials:** Polypropylene with Polyurethane Insulation

**Cooling Capacity:** 55° Below Ambient

**Average Power Draw at 32°C ambient and 5°C internal:**  
Less than 1.0 A/HR



**700-22082****SPHERE RVX-45 FRIDGE/FREEZER****Capacity:** 45L**Dimensions (mm):** 677L x 410W x 489H**Weight:** 19.8kg**Lid Opening:** End**Voltage:** Operates on both DC 12V/24V and AC 240V**Temperature Range:** -22°C ~ 10°C**Compressor:** SECOP compressor**Materials:** Polypropylene with Polyurethane Insulation**Cooling Capacity:** 55° Below Ambient**Average Power Draw at 32°C ambient and 5°C internal:**  
Less than 1.0 A/HR**700-22086****SPHERE RVX-55 FRIDGE/FREEZER****Capacity:** 55L**Dimensions (mm):** 709L x 455W x 498H**Weight:** 24.4kg**Lid Opening:** Side**Voltage:** Operates on both DC 12V/24V and AC 240V**Temperature Range:** -22°C ~ 10°C**Compressor:** SECOP compressor**Materials:** Polypropylene with Polyurethane Insulation**Cooling Capacity:** 55° Below Ambient**Average Power Draw at 32°C ambient and 5°C internal:**  
Less than 1.0 A/HR**700-22084****SPHERE RVX-50 FRIDGE/FREEZER****Capacity:** 50L**Dimensions (mm):** 677L x 410W x 519H**Weight:** 22.8kg**Lid Opening:** End**Voltage:** Operates on both DC 12V/24V and AC 240V**Temperature Range:** -22°C ~ 10°C**Compressor:** SECOP compressor**Materials:** Polypropylene with Polyurethane Insulation**Cooling Capacity:** 55° Below Ambient**Average Power Draw at 32°C ambient and 5°C internal:**  
Less than 1.0 A/HR**700-22088****SPHERE RVX-65 FRIDGE/FREEZER****Capacity:** 65L**Dimensions (mm):** 709L x 455W x 558H**Weight:** 25.5kg**Lid Opening:** Side**Voltage:** Operates on both DC 12V/24V and AC 240V**Temperature Range:** -22°C ~ 10°C**Compressor:** SECOP compressor**Materials:** Polypropylene with Polyurethane Insulation**Cooling Capacity:** 55° Below Ambient**Average Power Draw at 32°C ambient and 5°C internal:**  
Less than 1.0 A/HR



**700-22090****SPHERE RVX-75 FRIDGE/FREEZER**

**Capacity:** 75L

**Dimensions (mm):** 709L x 455W x 618H

**Weight:** 26.1kg

**Lid Opening:** Side

**Voltage:** Operates on both DC 12V/24V and AC 240V

**Temperature Range:** -22°C ~ 10°C

**Compressor:** SECOP compressor

**Materials:** Polypropylene with Polyurethane Insulation

**Cooling Capacity:** 55° Below Ambient

**Average Power Draw at 32°C ambient and 5°C internal:**

Less than 1.0 A/HR

